

Under Right to Information Act 2005

Introduction

Right to Information Act a Central Act has come to force with effective from 15th October 2005. This enactment has empowered the citizen to have the Right to Information. OPTCL being an undertaking of State Government of Orissa shall open its scope of Information to the public with all the Information, Records, documents, memos, opinion, advices, press Releases, circular, orders, log books, contents, reports, etc. except those restricted under the Act.

Objective & purpose:

The objective of this book is to provide details of Information in form of 17 manuals. The manuals etc are open to all and can be inspected free of cost.

Organization of the information:

This website contains details of Particulars of organizations, functions and Duties, Powers and duties of officers and employees, Rules, Regulations, Instructions, manual and records for Discharging functions, Boards of OPTCL, Names and designation of the Public Information officers, Directory of Officers and employees, monthly remunerations received each of its employees and Budget allocated etc.

Definitions

PIO Public Information Officer

APIO Asst. Public Information Officer

Contact Persons:

The following officers are the Contact Persons who will assist the persons who want to get more information on topics covered in the handbook as well as other information also:

Shri Ajaya Prasad Panda :	PIO, AGM(HRD) OPTCL, Janpath, Bhubaneswar-22
Smt Madhumita Swain :	APIO, DM(HRD) OPTCL, Janpath, Bhubaneswar
Sri Manas Lenka :	APIO, DM(Finance) OPTCL, Janpath, Bhubaneswar
Smt. Itishree Sahoo :	APIO, DM(HRD) OPTCL, Janpath, Bhubaneswar

Objectives:

- To effectively operate Transmission lines and Sub-Stations in the State for evacuation of power from the state generating stations and Central Sector so as to feed power to state distribution companies, wheeling of excess power to needy states, maintenance of the existing lines and sub-stations to undertake power system improvement by renovation up gradation and modernization of the transmission network.
- Main objects of OPTCL is to carry on the business of transmission and wheeling of electrical energy in the State and elsewhere for which purpose to acquire, establish, construct, erect, lay, operate, run, manage, maintain, enlarge, alter, renovate, modernize extra high voltage, high voltage, low voltage electrical transmission lines and associated sub-stations, cables, wires, accumulators plants, motors, meters, apparatus, computers and materials connected with transmission, telecommunication and telemeter equipments.
- To undertake, for and on behalf of others, erection, operation, maintenance, management of extra high voltage, high voltage low voltage lines and associated sub-stations, equipments apparatus, cable and wires.
- As per provisions under Section 39(1) of the Electricity Act 2003, the functions of OPTCL being a State Transmission Utility (STU) shall be:
 - To undertake transmission of electricity through intra-state Transmission System.
 - To discharge all functions of planning and co-ordination relating to intra-State transmission system with Central Transmission Utility, State Governments, Generating Companies, Regional Power Committees, Authority, Transmission and Distribution Licensees and any other person notified by the State Government in this behalf.
 - To ensure development of an efficient co-coordinated and economical system of intra-state transmission lines for smooth flow of electricity from a generating station of load centers.
 - To provide non-discriminatory open access to its transmission system for use by any licensee or generating company or any consumer on payment of transmission charges-surcharge as may be specified by the State Commission.
 - To restore power at earliest possible time through deployment of Emergency Restoration System in event any natural disasters like cyclone, flood etc.

MISSION:

- Transmission of power in large quantity with affordable price as per the expectation of customers, Government of Orissa and OERC
- Increase transmission network need based, to meet the demand of the state in 2025
- Develop a portfolio of Intra-State and some Inter-State transmission assets in national market including business expansion for evacuation of power outside the state in collaboration with PGCIL and others.
- Adoption of best construction and O&M practices supported by system driven processes enabled by cutting edge IT solution
- Diversion of business by providing consultations in the areas of construction and maintenance services and also in Telecommunication and other emerging areas so as to achieve optimum utilization of assets for generation of additional revenue
- Develop skilled and satisfied human resources, fostering a service-oriented attitude to its customers/stake holders and becoming empowered to meet Customer need in the changing scenarios.
- Building Research and Development wing for adoption of new technology Discharge the social responsibility with commitment on Environment protection, Health, Safety, Energy conservation and community Development.
- Achieve excellence in project implementation
- Practice higher standard of corporate governance and be financially sound company.

VISION:

OPTCL ranks one among the leading Transmission utilities in India. Transmitting quality, reliable and secured power with minimum transmission loss at a competitive price.

BRIEF HISTORY OF OPTCL

Orissa pioneered Power Sector Reform with an objective to unbundle generation, transmission and distribution and to establish an independent and transparent Regulatory Commission in order to promote efficiency and accountability in the Power Sector.

The State Government enacted the Orissa Electricity Reform Act, 1995 which came into force with effect from 01.04.1996. In exercise of power under Section 23 and 24 of the Orissa Electricity Reform Act, 1995, the State Govt. notified the Orissa Electricity Reform (Transfer of Undertakings, Assets, Liabilities, Proceedings and Personnel) Scheme Rules 1996. As per the Scheme, the transmission, distribution activities of the erstwhile OSEB along with the related assets, liabilities, personnel and proceedings were vested on GRIDCO. Simultaneously the hydro generation activities of OSEB along with related assets, liabilities, personnel and proceedings were vested on OHPC.

In order to privatize the distribution functions of electricity in the State, four Distribution Companies namely Central Electricity Supply Utility of Orissa Limited (CESU), North Eastern Electricity Supply Company of Orissa Limited (NESCO), Southern Electricity Supply Company of Orissa Limited (SOUTHCO) & Western Electricity Supply Company of Orissa Limited (WESCO) were incorporated under the Companies Act, 1956 as separate corporate entities. During November 1998 the State Govt. issued the "Orissa Electricity Reform (Transfer of Assets, Liabilities, Proceedings and Personnel of GRIDCO to Distribution Companies) Rules 1998" wherein the electricity distribution and retail supply activities along with the related assets, liabilities, personnel and proceedings were transferred from GRIDCO to the four Distribution Companies. Through a process of Internal Competitive Bidding (ICB), the four Distribution Companies were privatized during 1999.

After separation of Distribution business, GRIDCO left with electricity Transmission and Bulk Supply/Trading activities. GRIDCO was also declared as the State Transmission Utility and was discharging the functions of State Load Dispatch Center (SLDC).

The Govt. of India enacted the Electricity Act, 2003 which came into effect from 10th June 2003. Under the provision of the said Act, trading in electricity has been recognized as a distinct licensed activity, which can only be undertaken by a licensee to be granted by the appropriate Commission. The Act specifically prohibits the STU and Transmission Company in the State from engaging in the business of trading. GRIDCO being a State Transmission Utility was not permitted to engage itself in the trading in electricity and was required to segregate its activities in a manner within the Transitional period allowed under the Act that, the entity, which will undertake transmission STU, and SLDC function would not undertake the activities of Trading and Bulk Supply of Electricity.

Keeping in view the statutory requirement of the Electricity Act for separation of trading and transmission function in to two separate entities, the State Govt. incorporated Orissa Power Transmission Corporation Limited (OPTCL) to take over the transmission, STU / SLDC functions of GRIDCO.

In exercise of the power conferred under Section 39, 131, 133 and 134 of the Electricity Act, 2003, read with Section 23 and 24 of the Orissa Electricity Reform Act, 1995, the State Govt. issued the notification "Orissa Electricity Reform (Transfer of Transmission and Related Activities) Scheme 2005" on 09.06.2005. The Scheme was made effective from 01.04.2005.

By virtue of the Transfer Scheme, 2005, OPTCL now undertaking the functions of transmission of electricity in the State of Orissa and has been declared as the State Transmission Utility. OPTCL is also discharging the functions of SLDC .

Head Office Address:

ORISSA POWER TRANSMISSION CORPORATION LIMITED, JANPATH, BHOINAGAR,
BHUBANESWAR-751022

ADDRESS OF ALL OFFICES UNDER OPTCL:

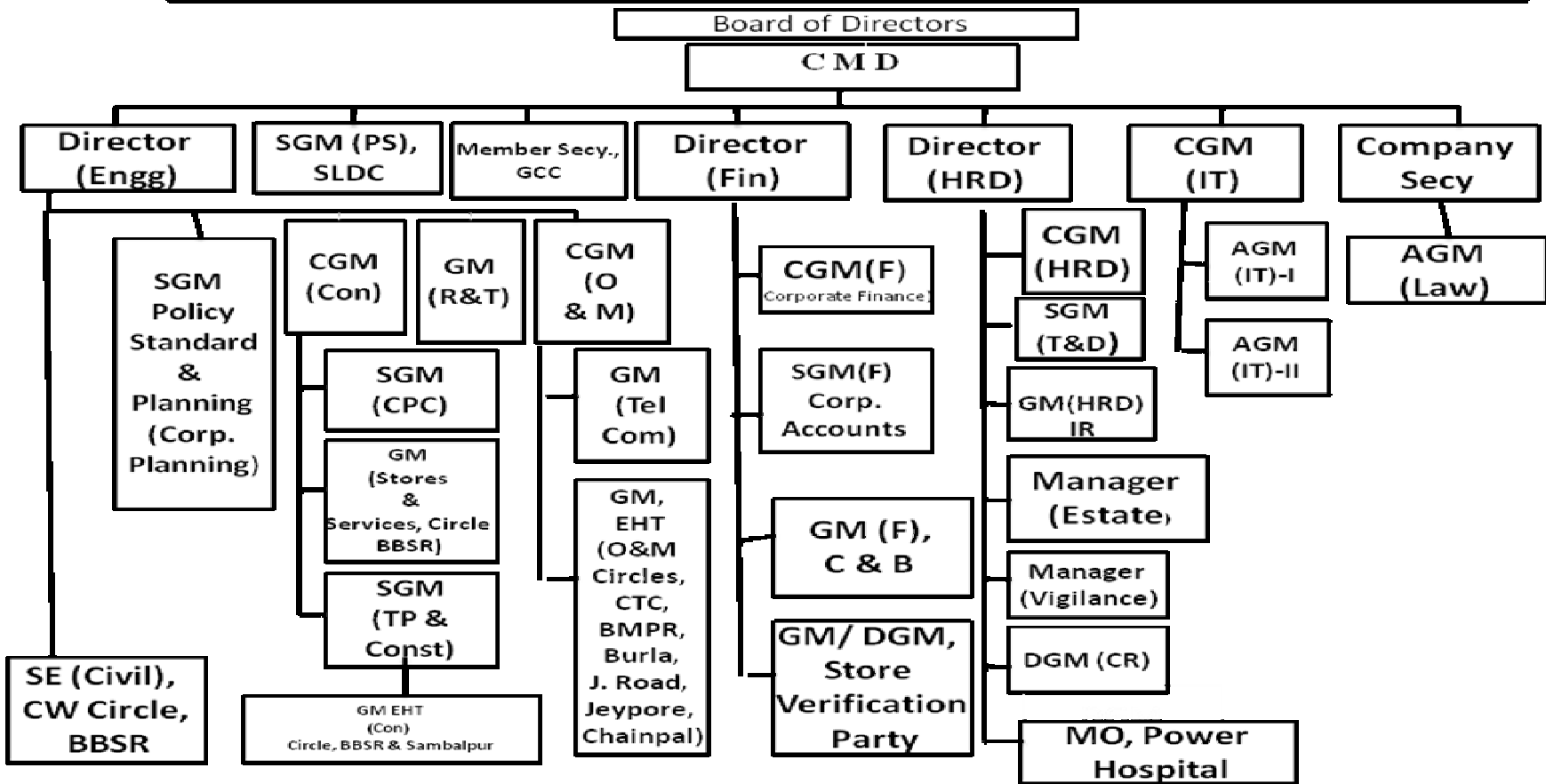
1. The General Manager, E.H.T.(O&M) Circle, Cuttack, Gorakabar, Madhusudan Nagar, Cuttack-8
2. The Asst.General Manager, E.H.T (O&M) Division, Choudwar, At-Kapileswar, Po-Choudwar, Dist-Cuttack- 754025
3. The General Manager, E.H.T.(O&M) Circle, OPTCL At/Po-Chainpal Colony, Dist-Angul-759104
4. The Asst.General Manager, E.H.T. (O&M) Division, Chainpal, At/Po-Chainpal Colony, Dist-Angul – 759104
5. The General Manager, E.H.T (O&M) Circle, Jajpur Road, At-Jajpur Road, Po-Ferro Chrome Project, Dist- Jajpur-001
6. The Asst.General Manager, E.H.T.(O&M) Division, Rengali, OPTCL, Qrs.No.C-10,At/Po-Rengali Damsite, Dist-Angul-759105
7. The Asst.General Manager, E.H.T. (O&M) Division, Jajpur Road, OPTCL, At/Po- Jajpur Road, Dist-Jajpur-755001
8. The Asst.General Manager, E.H.T.(O&M) Division, Balasore, OPTCL Near Remuna Golai, At/Po- Balasore, Dist-Balasore-756001
9. The General Manager,E.H.T (O&M) Circle, OPTCL, Burla, At/Po- Burla, Dist- Sambalpur-768017
10. The Asst. General Manager, E.H.T (O&M) Division , Burla At/Po-Burla,Dist-Sambalpur-768 017
11. The Asst.General Manager,E.H.T. (O&M) Division, Rourkela Area No. 7&8 Civil Township Area, Po-Rourkela-769 004, Dist- Sundargarh
12. The Asst. General Manager,E.H.T (O&M) Division , Joda, At/Po-Boneikela,Dist-Keonjhar – 758 038
13. The Asst. General Manager,E.H.T (O&M) Division, Bolangir At-Laltikra,Po-College Square,Dist-Bolangir-767001
14. The General Manager,E.H.T (O & M) Circle, OPTCL Berhampur,Bidyutpuri Colony,Po-Berhampur- 760 001, Dist-Ganjam
15. The Asst.General Manager,E.H.T. (O & M) Division, OPTCL, Berhampur, At-Aska Road,Po-Berhampur,Dist-Ganjam – 006
16. The Asst.General Manager,E.H.T. (O&M) Division, Bhanjanagar, At-Kantaipalli,Po-Badapada – 761 124, Via-Gobra, Dist- Ganjam.
17. The General Manager, E.H.T. (O&M) Circle, Jeypore, Main Road, Po-Jeypore, Dist-Koraput- 764 001
18. The Asst. General Manager,E.H.T. (O&M) Division, Therubaliu, At/Po-Theruvalli-765 018,Dist-Rayagada.
19. The Asst.General Manager,E.H.T. (O&M) Division, Jayanagar At-Bikram Nagar Prasad Rao Peta,Po-Jeypore, Dist-Koraput- 764001
20. The Asst.General Manager, E.H.T. (O&M) Division, Kesinga At/Po-Kesigna, Dist-Kalahandi-766012
21. The General Manager,E.H.T. Construction Circle, Bhubaneswar
22. The Asst. General Manager,E.H.T. Construction Division, Jeypore, At/Po-Jeypore-764 001,Dist-Koraput
23. The Asst. General Manager, E.H.T. Construction Division, Balasore,At-Hemakapada Motiganja, Dist-Balasore-756 001
24. The Asst. General Manager, E.H.T. Construction Division, Anugul, At/Po/Dist-Angul-759122
25. E.H.T. Construction Division, Jharsuguda, At-Beheramal, Po-Jharsuguda – 768 201,Dist- Sambalpur.
26. The Asst.General Manager, Equipment & Meter Relay Division, Rayagada, Seriguda ,At/Po-Rayagada, Dist- Rayagada- 765 002
27. The Asst. General Manager, Equipment & Meter Relay Division, Rourkela, At-Chhend Grid S/S, Colony, Po-Luharkela-769 009, Dist-Sundargarh.
28. The Asst. General Manager, Equipment & Meter Relay Division, Dhenkanal, At/Po-Durga Bazar,Dist-Dhenkanal.
29. The Manager,Telecommunication Division Plot No-lil-3,7&8 Area, At/Po- Rourkela-769 004,Dist-Sundargarh.

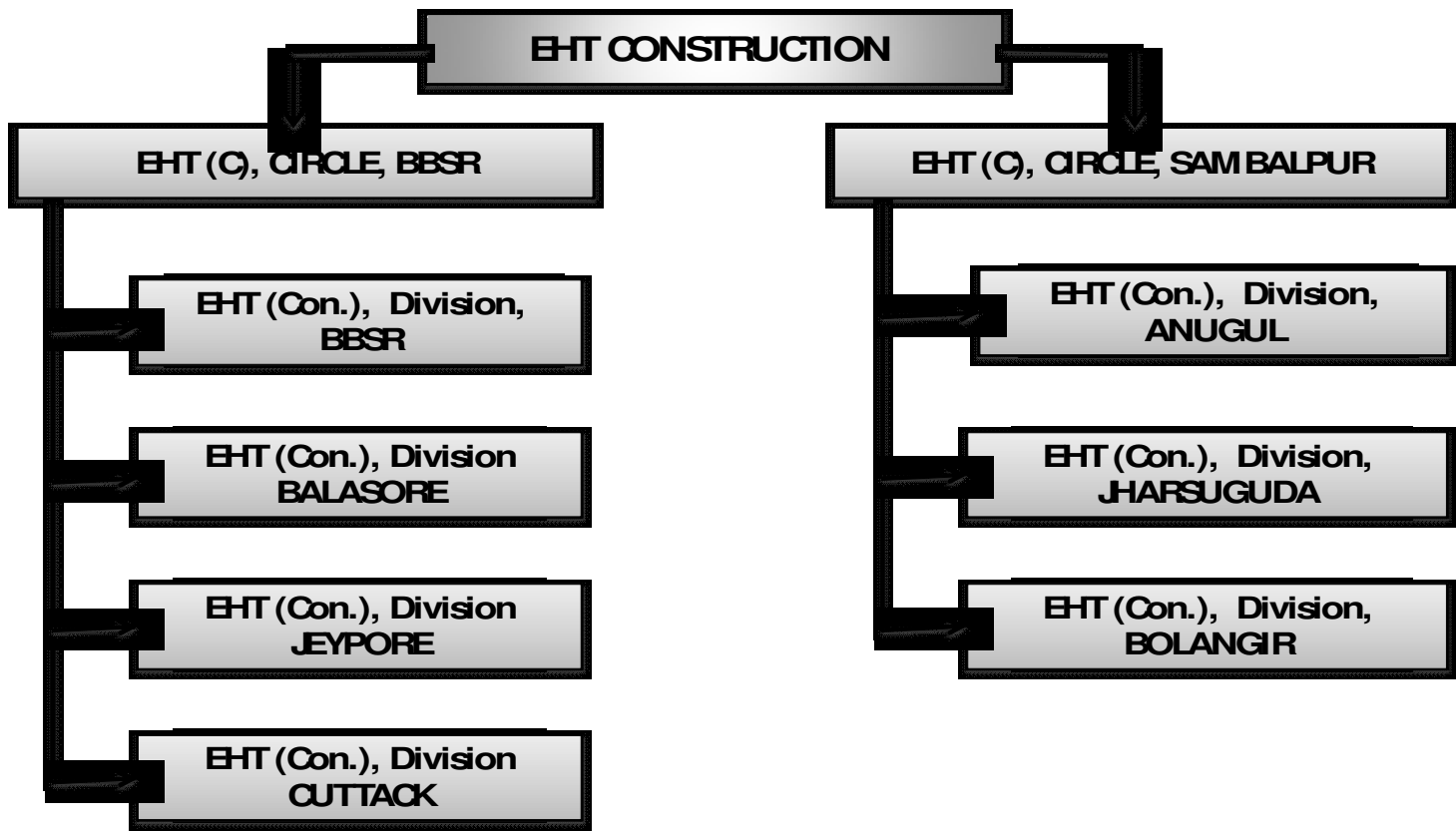
30. The Manager, Telecommunication Division, Meramundali, OPTCL At/Po-Talcher Thermal, Dist.-Angul – 759 101
31. The Manager, Telecommunication Division, OPTCL, At-Hilpatna, Po-Berhampur Dist-Ganjam-760001
32. The Manager, Telecommunication Division No.II, OPTCL Mancheswar Railway Colony, Near Slde Building, Bhubneswar – 751 017,
33. The Asst. General Manager, Equipment & Meter Relay Division, Burla, At/Po-Burla, Dist-Samblapur-768 017
34. The Asst. General Manager, Equipment & Meter Relay Division, Berhampur, At-Church Road, Po-Berhampur – 760 001
35. The Asst. General Manager, E.H.T. Stores Division, Jharsuguda, At/Po-Jharsuguda , Dist-Sambalpur
36. The Asst. General Manager, E.H.T. Stores Division, Rayagada, At/Po/Dist-Rayagada.-765001
37. The Asst. General Manager, Civil Works Division No.II, OPTCL, At/Po-Burla – 768001, Dist-Sambalpur.
38. The Senior General Manager, Power System, OPTCL, SLDC Building, Mancheswar Railway Colony, Bhubaneswar – 751 017, Dist-Khurda
39. The Manager, Arrear Clearance Cell, OPTCL, Talcher Thermal Power Station At/Po-Talcher Thermal, Dist-Angul- 759 101
40. The Liaison Officer, OPTCL, 45/1 Rafi Ahmad Kidwai Road, 5th Floor, Kolkata.
41. The Liaison Officer, OPTCL, 1250-Basanta Kunja, New Delhi-110030.
42. The Asst. General Manager, O & M Division. BBSR, Vidyut Bhawan, OPTCL, Bhubaneswar
43. The Asst. General Manager, E & M R Division, BBSR, T.W. Building, OPTCL, Bhubaneswar.
44. The General Manager, Telecommunication Circle, Corporate Building, Bhubaneswar
45. The Manager, Telecommunication Division, No.I, Technical Building, OPTCL, Bhubaneswar.
46. The Chief Engineer (T.P), Vidyut Bhawan, OPTCL , Bhubaneswar.
47. The Asst. General Manager, EHT Construction Division, Vidyut Bhawan, OPTCL, Bhubaneswar.
48. The General Manager, EHT Construction Circle, Vidyut Bhawan, OPTCL, Bhubaneswar.
49. The Chief Engineer, Civil Works Circle, Vidyut Bhawan, OPTCL, Bhubaneswar.
50. The Manager, Civil Works Division, No.I, Bhoinagar, Gridco Colony, OPTCL, Bhubaneswar.
51. The General Manager, PMU Transmission Circle, Vidyut Bhawan, OPTCL, Bhubaneswar
52. The General Manager, EHT Stores Circle, F.W.Building, OPTCL, Bhubaneswar
53. The Asst. General Manager, EHT Stores Division, Vidyut Bhawan, OPTCL, Bhubaneswar.
54. The Chairman –Cum- Managing Director, OPTCL, Head Qrs, Regd.Office, Janpath , Bhubaneswar-751022.

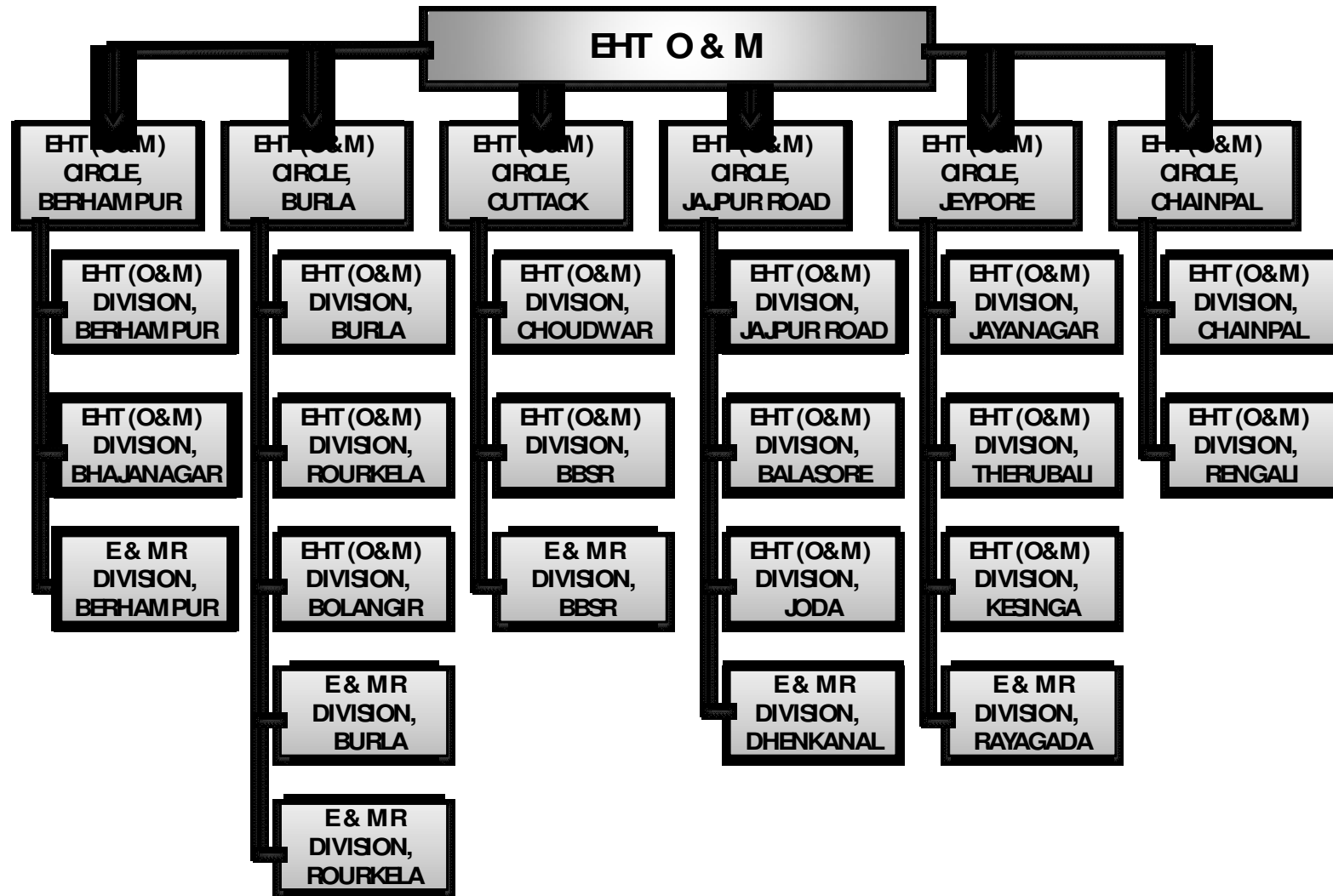
Office Working Hours in OPTCL :

10.00 AM to 05.00 PM (Lunch Hour 01.30 to 02.00 PM)

OPTCL ORGANISATION CHART







TELECOM CIRCLE, BBSR

TC DIVISION-I, BBSR

TC DIVISION-II, BBSR

TC DIVISION, ROURKELA

TC DIVISION, BERHAMPUR

TC DIVISION, MERAMUNDALI, TTPS

CIVIL WORK CIRCLE, BBSR

CIVIL WORK DIVISION-I, BBSR

CIVIL WORK DIVISION-II, BBSR

ELECTRICAL STORES CIRCLE, BBSR

EHT STORES DIVISION, BBSR

EHT STORES DIVISION, JHARSUGUDA

EHT STORES DIVISION, RAYAGADA

POWER AND DUTIES
(MANUAL. 2)

	DESIGNATION	POWERS	DUTIES
		Administrative Financial Statutory Others	Discipline
1	Board of Directors.	Full power subject to the approval of the State Govt. on certain policy issues.	
2	C.M.D	Chief Executive of the Organization and is entrusted with substantial power for management of the Corporation. Pursuant to the provision of the corporation for and the memorandum and Article of Association of corporation and as delegated by the Board of Directors.	
3	Director (Finance)	Head of Finance and exercises control over financer functions.	Finance
4	Director (Engineering)	Head of Technical discipline and exercises control over technical functions.	Construction, Operation and maintenance of projects.
5	Director (HRD)	Head of Human Resources discipline and exercises control over HR functions.	Human Resources
6	Company Secretary	Statutory Post under the companies Act-	Secretarial & Administration
7	Unit Heads.	Head of the Units exercises control over the Units.	Admn. Of Units being in its overall charge.

DUTIES AND RESPONSIBILITIES OF OFFICERS OF CORPORATE PLANNING.

SL NO.	DESIGNATION	DUTIES ASSIGNED
1	Sr.General Manager	Head of Corporate Planning and exercises control over all functions of planning, Policy issues and technical decisions. Interaction with Deptt. of Energy/ CEA/ Regulatory Commission etc.
2	D.G.M.(CP)	Reply to Central Govt./State Govt. on physical and financial progress of the Plan schemes. Reply to Assembly and Parliament questions.
3	AGM (CP)	Leading the Long Term Planning Cell. Deals the Standard Planning Procedure on SPP Amendment (SPP200), Data Administration(SPP201), Data Registration (SPP202), Data Management (SPP 203).All other information's pertaining to OPTCL with reference to Planning, Progress and Assembly questionnaire. In charge of PPP&D, Arrear clearance cell OPTCL Head Qr's under Sr.G.M.(Policy & Standard).
4	D.M.(CP)	Demand estimation in Planning Time scale (SPP204) and Long Term System Development (SPP207). Submission of statutory returns to OERC as per Gridcode. Submission of information to CEA/CPRI and other external agencies. Technical feasibility Study of the projects.
5	D.M.(CP)	System Studies internal /external (Prepaid) (SPP205), New connection application planning (SPP209). Power system study for submission to OERC and for internal reference. Contingency analysis, short circuit analysis and transient stability analysis.
6	A.M.(CP)	Submission of Physical and financial progress of plan schemes to State Govt. on monthly/ quarterly/ Annual basis. Compliance to assembly questions and other relevant compliance to Govt./ external agencies. All other works as & when instructed.

DUTIES AND RESPONSIBILITIES OF OFFICERS OF I. T. DEPARTMENT.

	DESIGNATION	DUTIES ASSIGNED	
1	C.G.M.(IT)	Conceptualizing, Designing, Planning, Developing, Implementing and Monitoring of overall IT strategy for OPTCL, in coordination with other functional departments planning the resources in order to achieve the IT targets for the Organization.	<i>CMD</i>
2	AGM(IT)	Overall in charge of data center and Facility Management Services. Other services include: •Maximizing the availability of Data Center •Administration of all operating systems in use in OPTCL •Database & application server administration • Disaster Recovery Management •Internet workflow automation	Manager (I.T)
3	Manager (I.T)	Overall responsibility of establishment and efficient operation and management of field IT centers which includes various standardized support services to the various Circles and Divisions.	Manager (I.T)
4	D.M (Elect) I.T	IT center Administration Center Security & Center Availability Database & Application servers Administrators, Disaster Recovery management, File & Print Services, mail & messaging services, enterprise workflow automation, Back/up & recovery etc.	AGM(IT)
5	D.M(I.T.)	Duties & Responsibilities: • Efficient operation & management of field IT centers • Effective coordination with user departments for efficient functioning of the IT centers • Enlistment of resource requirements for field IT centers. • Ensure proper maintenance of field IT center in coordination with the maintenance function. • Provision of user support services at the data centers. • Attending review meetings periodically and providing feedback. • Preparation and compliance of relevant MIS, as and when required, from time to time.	Manager (I.T)
6	J.M. (IT)	To assist AGM(I.T.)/ Manager (IT) in Administration and management & Maintenance of Major Business Systems	Manager (I.T)

DUTIES AND RESPONSIBILITIES OF OFFICERS UNDER C.G.M.(C.F)

	DESIGNATION	POWERS/DUTIES ATTACHED
1 .	Chief General Manager(F)	Exercises control over the day-to-day administration of Corporate Finance and financial transactions of the organization.
2 .	General Manager(Fin.)	Looking after the Loan. Financial transactions. Revenue of the organization and Assist the C.G.M.(F) in discharging of financial business of the organization under Corporate Finance.
3 .	Asst.General Manager(Fin,)	Looking after the Loan of the organisation and Accounts of Corporate Finance and assist the C.G.M.(Fin.) and G.M.(Fin.) on the above matters.
4 .	Manager(Fin.)	Looking after the Banking operations of the organisation and assist the C.G.M.(Fin.) and G.M.(Fin.) in discharging of their functions.
5 .	Asst.Manager (Fin)CashControl.	Dealing with the files/records in the matter of payment to Power Agencies/Suppliers and under the administrative control of the C.G.M.(Fin.) and G.M.(Fin.)
6	Asst. Manager(F) Revenue.	Dealing with the records relating to Revenue of the organisation and under the administrative control of the C.G.M.(F) and G.M.(F).
7	Asst. Manager (F) Banking.	Dealing with records of Corporate Accounts under the administrative control of CGM(F) and G.M.(F).

POWERS AND DUTIES OF OFFICERS UNDER CGM(CONST)

	DESIGNATION	DUTIES ASSIGNED
1	CGM (Const)	Head of construction wing and Central Procurement Cell. The Construction wing is responsible for execution of all EHT constructional activities that includes projects for all beneficiaries like Railway, Industries etc and different projects required for network strengthening projects under OPTCL. The Central procurement Cell is responsible all type of procurement OPTCL intends. Sr. GM(TP&C) and sr. GM(CPC) is reporting to CGM(Construction). He is the member of all type of committees responsible for procurement and also the member of different committees for policy decision in all matters. He is also responsible to put forth the views of management before Govt. as well as all statutory bodies as and when required. Cooordinating with all concerned for ongoing projects as well as all the network strengthening projects that are carried out directly by OPTCL and on behalf of different beneficiaries under deposit work scheme.
2	DM(Electrical)	Reporting to CGM(Construction), Extending technical support , co-coordinating with different field units of Construction wing for progress of work, providing all type of technical. Also preparing different reports and data bank that are necessary for submission to different statutory bodies as well as OPTCL management as per requirement.
1	Sr GM(TP&C)	Head of construction wing and reporting to CGM (Construction). Responsible for execution of all EHT constructional activities of Transmission Projects. Nodal Officer for power supply to different industries & Railway Traction S/s. Co-ordination for Policy decision of OPTCL interact with OERC, PTCC, Estimate Committee, PAC & PUC etc. Member of CSC for procurement of different materials.
2	General Manager (Monitoring)	Assist Chief Engineer (TP) for all the technical works as stated.
3	AGM (Asst.to Chief Eng)	Assist Chief Engineer (TP) in administration of the office DDO of the office of Chief Engineer (TP)
4	Manager (Elecl.) – 5 Nos.	progress of different Transmission Projects, Study feasibility. Power supply to different up-coming new industries & traction S/s.

1	(a)GM EHT(Const) Circle, Bhubaneswar.
	(i)AGMEHT(Const)Divn, Bhubaneswar.
	(ii)AGMEHT(Const.)Divn, Balasore.
	(iii)AGMEHT(Const.)Divn, Cuttack.
	(iv)A.G.M.EHTConst.)Divn Jeypore.
2	(b)G.M.EHT(Const)Circle, Sambalpur
	(i)A.G.M.EHT(Const)Divn Angul.
	(ii)AGM EHT(Constn.)Div Jharsuguda.
	(iii)AGM EHT (Const)Div, Bolangir.
	Manager/Deputy/Manager/ Asst. Manager in-charge of Sub-Divisions.

1	Sr GM(CPC)	Heading the Central procurement Cell and reporting to CGM (Construction). Responsible for all type of procurement that OPTCL intends. Floating tenders for Transmission line materials, sub station materials, turn key projects, O&M materials that are required for maintenance purpose as advised by CGM(O&M) and placing orders. Also responsible for smooth supply of materials, its inspection, delivery at site etc.
2	AGM/ Manager/ Deputy Manager/ Asst. Manger	They They are responsible for processing of files and assisting Sr.GMCPC) to complete the job description for the activities as mentioned above.

Duties and responsibilities of officers of O&M Wing.

	Designation	Duties assigned
1	Chief General Manager (O&M)	Head of the O&M Wing. Exercises control of all operation and maintenance functions. Manages Technical and Administrative problem relating to various Circles, coordinate with functional heads for early decision of O&M problems and ensure statutory norms of the O&M functions. The superior may entrust any other tasks. Reporting to Dir. (Eng)
2	DGM (System Operation)	Assist CGM (O&M) in all Technical works.
3	ACGM	Assist CGM (O&M) in the Administrative matters.
4	Asst. General Manager/ Dy. Manager / Manager	To assist CGM (O&M) in approval of tender documents, monitoring of works, collection of information from the field land analyzing them to take remedial measures.
5	GMs in-charge of O&M Circles.	Operation & Maintenance of Grid S/S under his control. Make specifications for the tenders and procurement of pretty materials, administrative control of staff in the Circle.
6	AGMs in-charge of Divisions.	Operation & Maintenance of Grid S/S under his control. Attending to breakdowns and administrative control of staff in the Division.
7	Manager/Asst. Manager in-charge of Sub-Divisions.	Operation & maintenance of Grid Sub-station and Lines. Attending to breakdowns. Maintaining cleanliness of the S/S. Replacement of theft tower members and repair of defective equipments

The above senior executives are supported by sub-ordinate officers and staff.

Decision Making Process

(Manual. 3)

OPTCL being a Company registered under the Companies Act, 1956, all provisions of the Act are applicable to the Corporation except those exempted. The Board of Directors of the Corporation have been delegated with the powers as per provisions of the Companies Act, 1956 which are envisaged in the Memorandum of Association and Articles of Association of the Corporation as under:

Powers of Directors:

The business of the Company shall be managed by the Board who may exercise all such powers of the Company and do all such acts and things as are not, by the Act, or any other act or by the Memorandum or by the Articles of the Company required to be exercised by the company in general meeting, subject, nevertheless, to these Articles, to the provisions of the Act or any other Act and to such regulations being not inconsistent with the aforesaid regulations or provisions, as may be prescribed by the Company in general meeting but no regulation made at any general meeting shall invalidate any prior Act of the Board which would have been valid if that regulation had not been made. Provided that the Board shall not, except with the consent of the Company in general meeting.

sell, lease or otherwise dispose of the whole, or substantially the whole of the undertaking of the Company, or where the Company owns more than one undertaking of the whole, or substantially the whole, of any such undertaking;

remit, or give time for the repayment of any debt due by a director;

invest, otherwise than in trust securities the amount of compensation received by the company in respect of the compulsory acquisition of any such undertaking.

borrow moneys where the moneys to be borrowed, together with the moneys already borrowed by the Company (apart from temporary loans obtained from the Company's bankers in the ordinary course of business, will exceed the aggregate or the paid up capital of the Company and its free reserves.

Contribute to charitable and other funds not directly relating to the business of the Company or the Welfare of its employees, any amounts the aggregate of which will, in any financial year, exceed fifty thousand rupees or five percent of its average net whichever greater.

The Board of Directors have delegated powers to the CMD and other functionaries for efficient functioning of the corporation.

Norms for Discharge of Functions

(Manual -4)

Project execution under OPTCL for different transmission lines and sub stations are being carried out as per different engineering practices, Construction Manuals etc. All procurements are being done as per OPTCL procurement Policy and with some provisions of OPWD code. Operation and Maintenance are being done as per the Grid Code. Tariffs are implemented as per the per the guidelines of OERC and CERC.

Rules and Regulations

(Manual -5)

1 Certificate of Incorporation dt.29.03.2004 issued by Registrar of Companies, Orissa.

Certificate of Commencement; of Business pursuant to Section 149(8) of the Companies Act, 1956 issued by Registrar of Companies, Orissa.

Memorandum of Association.

Articles of Association.

Notification No.6892 dt.09.06.2005 issued by Govt. of Orissa, Deptt. of Energy. The Orissa Electricity Reform (Transfer of Transmission and Related Activities) Scheme, 2005.

Notification No.6849 dated 09,.06.2005 issued by Govt. of Orissa, Deptt. of Energy pursuant to Clause 2(d) of the Orissa Electricity Reform (Transfer of Transmission and Related Activities) Scheme, 2005 notifying the appointed date.

Notification No.6035 dated 21.06.2006 issued by Govt. of Orissa, Deptt. of Energy on amendment of the Orissa Electricity Reform (Transfer of Transmission and Related Activities) Scheme-2005 notifying the restructured final Balance Sheet of GRIDCO and OPTCL as on 01.04.2005.

The above documents are with Company Secretary and available as per the procedure under RTI.

CATEGORIES OF DOCUMENTS

(MANUAL. 6)

NAME OF THE DOCUMENTS:

1. Gridco Officers Service Regulations
2. Gridco Officers Recruitment Policy
3. Gridco Officers Promotion Policy
4. OSEB Ministerial Service (Methods of Recruitment, Seniority and Promotion in the head Office of the Board) Regulations 1983
5. The ministerial Services (Methods of Recruitment Seniority and Promotion in the office of the Chief Engineer) Regulations 1982
6. OSEB Sub ordinate Audit and Account Service Regulations 1070
7. OSEB NMR Absorption regulation, 1989
8. OSEB Medical Service Regulations 1985
9. OSEB employees leave Regulations 1983
10. OSEB employees pension (Including old age and Family Pensions) Regulations 1992
11. Certified standing orders of the OSEB, Bhubaneswar (Orissa) under Industrial employment (Standing Orders) Act 1946 as adopted by Gridco.
12. Gridco Rehabilitation assistance Regulations 1997
13. Notifications and Office orders issued from time to time relating to the Implementations of the above regulations.

FORMULATIONS OF POLICY

(MANUAL. 7)

- The basic policies of the company are formulated at the Board of Directors level, which is laid down in consonance with the instructions, guidelines and policies received from the Government from time to time.
- The policies and decisions taken by the Board are communicated to all concerned department/ functional heads for information and implementation. For this purpose, office orders and circulars are issued.
- The three functional Directors viz. Directors (Finance), Director (Engineering) and Director (HRD) oversees the formulation of the policies and their implementation through respective departmental heads i.e. CGM, Sr. GM, GM and rest of the officers and support staff for this purpose.
- Different cases pertaining to different departments are handled as per the set Procedure and policy and in tune with the laid down delegation of powers. The matters are processed and reached up to the respective competent authority and after the decision the same is implemented accordingly.

BOARDS & COMMITTEES
(MANUAL. 8)

BOARD OF DIRECTOR IS THE APEX BODY OF OPTCL.

The Audit Committee is the affiliated body created by the Board.

BOARD OF DIRECTORS

SHRI HEMANT SHARMA, I.AS, CHAIRMAN -CUM-MANAGING DIRECTOR

SHRI G. MATHIVATHNAN, IAS, SECRETARY ENERGY, GOVT. OF ODISHA

SHRI SAURABH GARG, IAS, COMMISSIONER CUM SECRETARY, DEPTT OF P.E

SHRI D.K. JENA, JT. SECY TO GOVT., DEPTT. OF FIN.

SHRI D. K. ROY, FORMER CHAIRMAN, OERC, BHUBANESWAR.

SHRI S. K. RATH, DIRECTOR(HRD),

SHRI B.P.MAHAPATRA, DIRECTOR(FIN)

SHRI S.K. DAS, DIRECTOR(ENGG.)

SHRI SHITAL KUMAR JENA, FORMER MEMBER OERC, BHUBANESWAR.

SHRI SUNIL KUMAR DAS, CA, M/S SUNIL DAS & ASSOCIATES, CA CUTTACK.

PROF. (DR.) MUKTI KANTA MISHRA, PRESIDENT CENTURION UNIVERSITY.

MEMBERS AUDIT COMMITTEE:

SHRI D. K. ROY

FORMER CHAIRMAN, OERC, BHUBANESWAR.

SRI. D. K. JENA

JT. SECY TO GOVT., DEPTT. OF FIN.

SRI SUNIL KUMAR DAS

CA, M/S SUNIL DAS & ASSOCIATES, CA CUTTACK

MEMBERS OF HRD COMMITTEE

SHRI D. K. ROY

FORMER CHAIRMAN, OERC, BHUBANESWAR.

SRI. D. K. JENA

JT. SECY TO GOVT., DEPTT. OF FIN.

PROF. (DR.) MUKTI KANTA MISHRA, PRESIDENT CENTURION UNIVERSITY.

SRI. S. K. RATH

DIRECTOR (HRD)

SRI. B. P. MAHAPATRA

DIRECTOR (FINANCE)

RTI MANUAL- 9 EMPLOYEES DATABASE

ALL UPDATED MAN IN POSITION AS ON 01.05.2012 UNDER GRIDCO/OPTCL

MANAGER & ABOVE RTI MANUAL-IX

<u>SL NO</u>	<u>EMP ID</u>	<u>NAME</u>	<u>DESIGNATION</u>	<u>PERMANENT ADDRESS</u>
1	37587	PRABODHA KUMAR MISHRA	AGM (ELEC)	R.C.P.LANE,B.P.CHHAK,CUTTACK
2	37222	UMAKANTA SAHOO	AGM (ELEC)	AT-MULKAIDA,ANANDAPUR,SORO,BALASORE
3	38542	BIKRAM KESHORI SINGH	AGM (ELEC)	AT/PO-SAHADEV KHUNTA,DIST-BALASORE
4	37628	ASHOK KUMAR BEHURA	AGM (ELEC)	AT/PO-MUKTIMANDAPA SAHI, PURI
5	38414	GOPAL CHANDRA PATI	AGM (ELEC)	PLOT NO.1293/A,BRAHMESWAR COLONY,NEAR CANAL RASULGARH,BBSR
6	38513	SANKAR KRISHNA	AGM (ELEC)	*
7	54892	BRUNDABAN JETHI	AGM (ELEC)	MANSINGHPATNA,MATHALANE,TULASIPUR,CUTTACK
8	61753	PRATAP CHANDRA MOHAPATRA	AGM (ELEC)	*
9	33435	NILAMBAR DASH (I/C 419)	AGM (ELEC)	AT/PO;RAYABAHADUR LANE,DIST-PURI
10	38063	LAXMIKANTA MOHANTY	AGM (ELEC)	AHIYAS,JAJPUR
11	33448	KESHAB CHANDRA NAYAK	AGM (ELEC)	GANDHINAGAR 2 ND LANE BERHAMPUR.
12	37800	BHUBANESWAR PANDA(I/C E&MR S/D RAYAGADA &STORES DIVN. RGD)	AGM (ELEC)	RAYAGADA
13	33451	UTTAM KUMAR SAMAL	AGM (ELEC)	AT/PO-BALIABIL, BINJHARPUR, JAJPUR
14	37082	SACHINDRA PATTNAIK	AGM (ELEC)	JALANANDA,CHANDANPUR,MAUYRBHANJA
15	35749	GANGADHAR PATEL	AGM (ELEC)	AT-JANDA,PO-GOSAINPARA,SAMBALPUR
16	35723	KAILASH KUMAR AGARWALA	AGM (ELEC)	AT/PO/DIST-BARAGARH
17	34487	SANGRAM KESHARI DAS	AGM (ELEC)	AT/PO-SUNAHAT, BALASORE
18	37293	PARTHA SARATHI PATRA	AGM (ELEC)	AT-BADABAZAR, PO-BARIPADA, WORD NO.8, DIST-MAYURBHANJ
19	37123	LALATENDU NAYAK	AGM (ELEC)	AT-ARTUKAVIRAJ ROAD,PO-MOTIGANJA,BALASORE
20	35710	BIJAYA KUMAR SAHOO	AGM (ELEC)	*
21	37631	LINGARAJ DASH	AGM (ELEC)	RAJAGURU STREET,PARALAKHEMUNDI,GAJAPATI
22	36915	PURNENDU SEKHAR SAHOO	AGM (ELEC)	*
23	37871	AMAR NATH MOHANTY	AGM (ELEC)	LIG-88,BARAMUNDA,H.B,CLONY,BHUBANAESWAR
24	33477	NIMAIN CHARAN SWAIN	AGM (ELEC)	AT-SENTO,PO-ALIRAMTA,PS-BALIKUDA,JAGATSINGHPUR
25	38469	BICHITRA NANDA NAYAK	AGM (ELEC)	AT/PO-MIRJAPUR,SALEPUR,CUTTACK
26	38638	MANAS RANJAN ROUL	AGM (ELEC)	ANANDANAGAR,HKIMPADA,ANGUL
27	35752	SURENDRA PATEL	AGM (ELEC)	*
28	37884	BIKASH CHANDRA PANDA (I/C O&M DIVN. THERUVALLI)	AGM (ELEC)	
29	34560	BISWAS NARAYAN BOHIDAR	AGM (ELEC)	OPPOSITE CHURCH,G.M.COLLEGE ROAD,SAMBALPUR
30	33620	PRADIPTA KUMAR MOHAPATRA	AGM (ELEC)	149/9A-ACHARYA BIHAR,BHUBANESWAR
31	35864	BIBHUDA NANDA UDGATA	AGM (ELEC)	*

32	61964	PRASANTA KUMAR NAYAK	AGM (ELEC)	*
33	37590	MADHUSUDAN PANI (I/C STORES DIVN BBSR)	AGM (ELEC)	AT-AMARESWAR,PO-NIMAPARA,PURI
34	35426	SANDEEP KUMAR PURI	AGM (ELEC)	*
35	37181	SHIBA SANKAR NAYAK(EXECUTIVE ASST.TO DIR.(COMM))	AGM (ELEC)	*
36	37149	ASHOK KUMAR SAMANTRAY(I/C GRIDCO DATA CENTER)	AGM (ELEC)	AT-ANEIPAL POST-MADHURGANDKHAMAR VIA-PATKURA DIST-KENDRAPARA
37	39718	RAJ KISHORE PRADHAN	AGM (ELEC)	ARTAKABIRAJ ROAD,MOTIGANJ,BALASORE
38	36973	SRIKANTA KUMAR CHOUDHURY(DEPUTED TO GRIDCO)	AGM (ELEC)	AT/PO-BHUSANDAPUR, DIST-KHURDA
39	33604	JAYANTA KUMAR PARICHHA	AGM (ELEC)	PLOT NO-32,SURYA NAGAR,UNIT-7,BBSR-03
40	38472	SANKAR PRASAD PADHI (DEPUTATED TO CESU 4329/17.03.2012)	AGM (ELEC)	*
41	57637	SWARUP KUMAR HARICHANDAN	AGM (ELEC) EXECUTIVE ASST.	BENAGAON,KANAS,PURI
42	37040	NIHAR RANJAN PRADHAN	AGM (ELEC) EXECUTIVE ASST.	*
43	53022	UMESH KUMAR GUPTA(I/C SLDC MANCHESWAR)	AGM (FINANCE)	AT/PO:IRC VILLAGE,NAYAPALLI,BHUBANESWAR,KHURDA
44	55998	GHANASHYAM KHATUA	AGM (FINANCE)	RAMACHANDRAPUR,RAGADI, BANKI, CUTTACK
45	52830	SAMBIT KUMAR SAMANTA	AGM (FINANCE)	PLOT NO-205/2,AERODRUM AREA, BHUBANESWEAR
46	57877	BIBHUTI BHUSAN NAYAK	AGM (FINANCE)	AT/PO-BALIPATNA PS-PATAMUNDAI DIST-KENDRAPARA
47	49159	SRIKANTA KUMAR SAHOO(DEPUTED TO GRIDCO)	AGM (FINANCE)	*
48	36030	BIDYADHAR BHATTA(DEPUTED TO GRIDCO)	AGM (FINANCE)	VILL-BIRABHANDA KUHA BHUBANESWAR DIST-KHURDA
49	42572	SUBHENDU DASH (DEPUTATED TO GRIDCO)	AGM (FINANCE)	AT-KALIKA DEVI SAHI PURI DIST-PURI
50	42444	AJAYA KUMAR DAS	AGM (HRD) I	BAGADABARI, BINJHARPUR,CUTTACK
51	54595	SANJUKTA BEHERA (I/C PENSION&NODAL OFFICER LEGAL,IR,HR,PENSION)	AGM (HRD) II	VM-2,MODEL HOUSE BOARD COLONY,VSS NAGAR ,BBSR,KHURDA
52	42415	ANITA SATPATHY	AGM (HRD) III	BOUDHARAJ,PO-BOUDHARAJ,KANDHAMAL
53	37602	AJAY PRASAD PANDA	AGM (HRD) IV	AT-BHUBANPUR, JAGATPUR, CUTTACK
54	38795	RASMI KUMAR PANDA	AGM (HRD) V	HILL PATNA, BERHAMPUR, GANJAM
55	42767	CHANDRA SEKHAR PRADHAN(I/C MPPR,D.B CELL)	AGM (HRD) VI	PODAMARI, MAHANGA, CUTTACK
56	55550	PRIYADARSAN PATRA	AGM (IT)	AT-POLAMKABEREMILATABILA PO-BHUBANA DHENKANAL
57	25676	GOLAK BIHARI PANDA	AGM (IT)	AT-KANARPUR,ASARADA,BOLAGADA PURI
58	47056	GHANA SHYAM PANIGRAHI(DEPUTED TO GRIDCO)	AGM (LAW)	AT-SONPUR SONPUR DIST-SONPUR*
59	38357	JAGANNATH PRASAD MOHANTY, ASST. TO SR GM(PS)(DDO)	AGM (MECHENICAL)	AT/PO-DEBAGRAMA,BALIKUDA,JAGATSINGHPUR
60	38766	PRADIPA KUMAR MISHRA	AGM (MECHENICAL)	NAYAGARH
61	28635	DEBARAJ RATH	AGM (TELECOM)	PLOT NO.983, PRAKRUTI BIHAR, BARAMUNDA, BHUBANESWAR
62	63306	SUSMITA DASH (REQUITATED TO GRIDCO)	ASST.COMPAN Y SECRETARY(M)	AT/PO:ATTA,PS:SUKINDA,DIST-JAJPUR,755018

			GR. RANK)	
63	23445	JITENDRIYA PRASAD DAS	CGM (ELEC)	PLOT NO-452,SAHID NAGAR,BBSR-07
64	21128	KISHORI MOHAN PARIDA	CGM (ELEC) O&M	PLOT NO.A79E,NAYAPALLI,NUASAHI,BBSR
65	55547	RAMESH CHANDRA MISHRA	CGM (FINANCE)	AT-TARASIA SAHI POST-RAJNAN PUR DIST-NAYAGARH
66	55097	MANGALAGIRI ANANTA RAO	CGM (IT)	101,SHARDA BHABAN,NILAKHANTA NAGAR, NAYAPALLI,BBSR-751012.
67	64444	HEMANT SHARMA (IAS) (I/C GRIDCO)	CMD	BHAGWATT BHAWAN,KISHANPURA,JOGIYANPAL,SAHARANPUR,U.P-247001
68	55646	PRASANTA KUMAR DAS	COMPANY SECRETARY (SGM RANK,19.10.20 11)	CHASHIRI, SHAKHIGOPAL, PURI
69	33422	MANORANJAN CHOUDHURY	DGM (ELEC)	PLOT NO.7, ANANDA SARANI, BERHAMPUR, DIST-GANJAM
70	36663	UPENDRA NATH MISHRA	DGM (ELEC)	34/216 GAJAPATI NAGAR, SANIK SCHOOL,BBSR-05
71	33464	RABI PRASAD NAYAK	DGM (ELEC)	AT-BHAGESWARPUR, PO-KENDRAPARA
72	36999	PRADIPTA KUMAR DASH	DGM (ELEC)	AT/PO-CHASHAKHANDA, JAGATSINGHPUR
73	36957	RADHA RAMAN PANDA	DGM (ELEC)	PALUR BANGLOW,BERHAMPUR
74	33493	BIMAL PRASAD MISHRA	DGM (ELEC)	KHUMUR,KHALARE,ANGUL,DHENKNAL
75	33547	MANORANJAN MOHANTY	DGM (ELEC)	AT-BELAR,NUAGAON,POST-TERAGAON,KENDRAPARA
76	54780	BAISHNABA CHARAN PADHIHARY	DGM (FINANCE)	AT-THAURI KENDRAPADA DIST-KENDRAPADA
77	55518	GOBIND AGARWALLA (ERP FINANCE MODULE)	DGM (FINANCE)	*
78	26897	BIPIN BIHARI SATAPATHY	DGM (TELECOM)	AT-NARASINGHPUR, PO-DHARMASALA, DIST-JAJPUR
79	66112	PRASANTA KUMAR PRADHAN	DIRECTOR (COMMERCIAL)	VSS NAGAR (WARD NO-IX),BARAGARH,SAMBALPUR-768028 ODISHA
80	69069	SUSANTA KUMAR DAS	DIRECTOR (ENGG.)	B-63,RAIL VIHAR,CHANDRASEKHARPUR,BBSR,KHURDA-751023
81	55620	BIBHU PRASAD MOHAPATRA(I/C GM(FIN)OPTCL14.07.2011)	DIRECTOR (FIN. & CA)	AT-BADAMBADI, CUTTACK
82	64499	SANTANU KUMAR RATH	DIRECTOR (HRD)	FLAT NO-B/302,SONALI PALACE,SAILASHREE VIHAR,BBSR,KHURDA,ODISHA
83	56081	BANSHIDHAR OJHA(DEPUTED TO GRIDCO)	ECONOMIST	FAKIR SAHI,SUHAG PUR,KAKATPUR,PURI
84	63434	SAYAD SULEMAN ALI (I/C CWD BURLA,LOOK CWC BBSR)	EXECUTIVE ENGINEER(CIVI L)	QRS NO-3R-7/2,MLA COLONY,BBSR,KHURDA,751001.
85	61638	SANJAY KUMAR HOTA(I/C GRID CO-ORDINATION COMMITE 90L)	GM (ELEC)	AT-SUBHADRA APPT.,PO-RAGHUNATHPUR,KHURDHA
86	24794	RABINDRA KAMILA	GM (ELEC)	AT-SANAGADIA,PO-BARIPADA,DIST-BARIPADA
87	25535	JITENDRA BASTIA	GM (ELEC)	AT-BASTIA NIVAS, COLLAGE CHHAK, PO-HAKIMPADA, DIST-ANGUL
88	62015	KISHORE CHANDRA MISHRA	GM (ELEC)	KOLATHAPATNA,GAUDUNI GADIA,JAJPUR
89	25692	BUDHESWAR NANDA(I/C TTPS)	GM (ELEC)	CHHEND, ROURKELA
90	24778	ADITYA NARAYAN SAR	GM (ELEC)	*
91	60871	AJAYA KUMAR MOHANTY	GM (ELEC)	KETUAPAL, DADHIBAMANPUR, SINGHPUR, CUTTACK
92	27737	PRAFULLA CHANDRA TRIPATHY	GM (ELEC)	AT-ADARS NAGAR,SAMBALPUR
93	26615	SAROJA KANTA PARIDA	GM (ELEC)	AT/PO-CHARAPADA, PO-INDUPUR, KENDRAPARA
94	25056	LAXMIDHAR MOHAPATRA(DEPUTED TO GRIDCO)	GM (ELEC)	AT-TUNAPUR, BADAMBIA, SINGHPUR, CUTTACK
95	55576	SRINIVAS MOHAPATRA	GM (FINANCE)	AT/PO-B/CGEKKUA, PS-BARASHAI, MAYURBHANJ
96	55505	NIRANJAN SAHOO	GM (FINANCE)	AT/PO-JAGAMATAPRASAD, MADHYAKHANDA, DASAPALA, NAYAGARH

				JUGUDI,SIALA,GANJAM
97	61696	KRUSHNA CHANDRA BEHERA(I/C STORES CIRCLE BBSR)	GM (MECHANICAL)	
98	62440	RAJ KISHORE DAS	GM (TELECOM)	AT-MADHAB NAGAR,JANUGANJA,BHADRAK
99	63418	SYAMA PRASAD PATTANAIAK(OAS-I)	LAND OFFICER	QTR. NO-28,SANTI KUNJA,NEAR DIG OF POLICE OFFICE,BERHAMPUR-4,GANJAM
100	40309	SARBA PRIYA JETHY	MANAGER (ELEC)	DAGARPADA,CHANDINI CHOUCK,CUTTACK
101	38906	PRASANT KUMAR DAS (B)	MANAGER (ELEC)	GUL NAGAR,KENDRAPARA
102	41252	PRASANT KUMAR SATPATHY	MANAGER (ELEC)	BIRAJAGENAPUR,PO-BEGUNATHPADDA,GANJAM
103	38399	SUBRAT KUMAR MITRA	MANAGER (ELEC)	MADHUSUDAN NAGAR,TULASIPUR,CUTTACK
104	35707	PRASANTA KUMAR RATH	MANAGER (ELEC)	AT-GANGAPUR SASAN, PO-JAGAMOHAN, DIST-GANJAM
105	41278	BISWA RANJAN MISHRA (P.I.O)	MANAGER (ELEC)	AT: BANAHARA, PO: BHAGAT PUR, KENDRAPARA
106	35778	BIBEKANANDA PANI (SDO)	MANAGER (ELEC)	BIJIDOL,KAHIHA,ANGUL
107	38302	UMESH PRASAD DAS (SDO)(I/C DIVN CHOUDWAR)	MANAGER (ELEC)	NIMAKANA,TIRTOL,JAGATSINGHPUR
108	35822	PADMANAV SWAIN	MANAGER (ELEC)	JHANJIRMANGALA ,CUTTACK
109	42428	BIJAYA KUMAR DAS (SDO)	MANAGER (ELEC)	BARI BAGADA,BARI CUTTACK,JAJPUR
110	40958	RABI SANKAR MISHRA	MANAGER (ELEC)	KALNA, ST.BIJIPUR,BERHAMPUR
111	42741	CHITARANJAN BEHERA	MANAGER (ELEC)	AT/PO- DAHISADA SORO DIST- BALASORE
112	54946	MAYA BANDHU PRADHAN	MANAGER (ELEC)	*
113	39114	RABI NARAYAN PANDA (SDO)	MANAGER (ELEC)	PLOT NO-1860, AT-NUASAHI, PO-NAYAPALLI, BHUBANESWAR
114	38935	RABI NARAYAN SAHOO (SDO)	MANAGER (ELEC)	AT-AMUNIAPATANA,KAKATPUR,PURI
115	42387	SUKANTA PANDA	MANAGER (ELEC)	PLOT NO.105, NEW PAPUJI NAGAR, AERODROMA AREA, BHUBANESWAR
116	39143	SUNKURU SUDHAKAR RAO	MANAGER (ELEC)	BEERAKA STREET, NEAR VENKATEAWAR TEMPLE,BERHAMPUR,GANJAM
117	41533	PRAFULLA KUMAR PATI(I/C EHT © S/D NO-1 BBSR I/C GRID S/D CHANDAKA)	MANAGER (ELEC)	BHALANGA,RAHASOI,JAJPUR
118	62185	MD ZIAL HUDA	MANAGER (ELEC)	HOSPITAL ROAD,JAJPUR.
119	40396	ATULYA KUMAR PATRA	MANAGER (ELEC)	AT-QR.NO-C/620, COIL NAGAR,ROURKELA, SUNDERGARH
120	56586	JAYRAM SAHOO (SDO)	MANAGER (ELEC)	JHARGIRIPUR,KRUSHNAPRASAD,NIALI,CUTTACK.
121	41223	A.RAMESWAR RAO SUBUDHI (SDO)	MANAGER (ELEC)	AT/PO-GOLLAPALI STREET, BERHAMPUR, GANJAM
122	44521	SURESH CHANDRA PATRA	MANAGER (ELEC)	AT/PO-BARUNA,VIA-DLAVERA,DIST-KENDRAPARA
123	41306	RAJ KISHORE PARIDA (SDO)	MANAGER (ELEC)	*
124	35848	RAJAT SEKHAR DAS BHATTAMISHRA (I/C220KV LINE S/D THERUVALLI,426)	MANAGER (ELEC)	AT-BOMIKHAL,GURDANAGAR,BUDHESWARI COLONY,BBSR

125	57736	JASOBANTA NARAYAN CHOUDHURY	MANAGER (ELEC)	AT/PO-BHUSANDAPUR, DIST-KHURDA
126	41294	LAXMI KANTA MISHRA (SDO)	MANAGER (ELEC)	AT/PO-BANDRA, LOISINGA, BOLANGIR AT-SIDHESWAR LANE, PS-LALBAG, CUTTACK-8
127	42613	SUDIPTA SENGUPTA (SDO)	MANAGER (ELEC)	
128	38948	SANBHU NATH SAHA (SDO)	MANAGER (ELEC)	VILL-TILAKAPUR, PO-AMHARA, DIST-PATNA(BIHAR)
129	38951	TIKANATHA HARIJAN(SDO) (I/C GRID S/S BUDHIPADAR)	MANAGER (ELEC)	*
130	35806	ADIT KUMAR SHARMA(SDO)	MANAGER (ELEC)	*
131	38782	MANOJ KUMAR DAS(SDO)	MANAGER (ELEC)	AT-K.M.B.M. SAHI, PO-BARIPADA, DIST-MAYURBHANJ
132	39127	PRADIPTA KUMAR BHUYAN	MANAGER (ELEC)	AT/PO-SANSIDHA, PS-AUL, KENDRAPARA
133	40325	SWAPANA KUMAR TRIPATHY	MANAGER (ELEC)	AT-JAGADA, PO-JHIRAPANI, ROURKELA, SUNDARGADA-42
134	41281	RABINDRA KUMAR SAHOO (I/C S/D JAJPUR ROAD)	MANAGER (ELEC)	KHINDA BENTALA, ANGUL
135	60660	NIKUNJA BIHARI MOHAPATRA	MANAGER (ELEC)	
136	40312	SARADA KANTA SATPATHY (SDO)	MANAGER (ELEC)	*
137	38360	SADANANDA PATRA (SDO)	MANAGER (ELEC)	M.G. ROAD, COLLEGE SQUIRE, ASKA, DIST-GANJAM
138	61654	RABINDRA NATH MOHAPATRA	MANAGER (ELEC)	
139	44831	SANTOSH KUMAR PRADHAN	MANAGER (ELEC)	*
140	41546	SANJAYA KUMAR DUTTA	MANAGER (ELEC)	KESHABA STREET, MOTIGANJA, BALASORE
141	42501	SUDHANSU SEKHAR NANDA	MANAGER (ELEC)	AT/PO-DHALPUR, DHENKANAL
142	41265	PRADIPTA KUMAR NANDA (SDO)(I/C SDO T/L S/S DUBURI)	MANAGER (ELEC)	KATHAJODI VIHAR, MADHU PATNA, CUTTACK.
143	42390	BIBHU PRASAD MOHAPATRA (SDO)	MANAGER (ELEC)	*
144	41195	UPENDRA KUMAR PATI	MANAGER (ELEC)	AT/PO-RASOL, DHENKANAL
145	38919	SAKTI PRASAD DAS	MANAGER (ELEC)	PLOT NO.29-TANKAPANI ROAD, NEAR RAJARANI TEMPLE, RAJARANI COLONY, BBSR-2
146	55026	PRADEEP KUMAR DASH(B)	MANAGER (ELEC)	B-1861, NALCO NAGAR, ANGUL
147	42626	GOPAL KRUSHNA PADHI	MANAGER (ELEC)	GAYATRI BHABAN, GANDHI NAGAR, BERHAMPUR, GANJAM
148	35765	SARAT KUMAR DAS	MANAGER (ELEC)	PLOT NO-11, SURYA NAGAR, UNIT-VII, BHUBANESWAR KHURDA
149	39945	TAPAS PATTANAIK (I/C SAFETY)	MANAGER (ELEC)	CHANDAN BAZAR, DHENKANAL TOWN, DIST-DHENKANAL
150	42600	JAYANTA KUMAR SENAPATI	MANAGER (ELEC)	
151	38779	SUSHANTA KUMAR PANIGRAHI	MANAGER (ELEC)	*
152	39130	PRASANTA KUMAR PANDA(I/C BILLING WORK R&T)	MANAGER (ELEC)	*
153	38373	GYANARANJAN PANIGRAHI	MANAGER (ELEC)	AT/PO-PRATAPADA, VIA-KANTAAPADA, DIST-BALASORE
154	62002	SAMIR KUMAR MOHANTY	MANAGER (ELEC)	*

155	60686	UMAKANTA SAHOO(DEPUTED TO GRIDCO)	MANAGER (ELEC)	BALAGANDI SAHI, PURI
156	37839	NURUDDIN KHAN(DEPUTED TO GRIDCO)	MANAGER (ELEC)	AT-GAWHARMAGAR,CHARINANGAL,BALICHANDRAPUR, CUTTACK
157	42402	PRIYABRATA PATNAIK (DEPUTATED TO OERC 16.08.2005)	MANAGER (ELEC)	NIL
158	39099	PRASANT MAJHI	MANAGER (ELEC)	AT/PO-NANDAPUR,SAMBALPUR
159	19712	PURNA CHANDRA DAS (I/C O &M DIVN.CHOUDWAR,I/C CWD BBSR)(A.P.I.O)	MANAGER (FINANCE)	AT/PO-NARADA, TURINTIRA, BALIPATNA, KHURDA
160	21339	RAMESH CHANDRA MISHRA (I/C TELECOM DIVN. RKL. & E&MR DIVN RKL.)	MANAGER (FINANCE)	AT/PO-BIRAPURSOTAMAPUR, DIST-PURI
161	52489	RADHA RANI KHANDLWALLA (I/C O&M CIRCLE J.ROAD)	MANAGER (FINANCE)	C/O-JYOTI PHARMACEUTIAL TARA MARKET COMPLEX,MOTIGANJ,BALASORE.
162	21371	ATALA BIHARI KHATOI	MANAGER (FINANCE)	AT-ALIPUR, MAHASINGHAPUR, SALEPUR, CUTTACK
163	20882	BRUNDABAN CHANDRA DASH (I/C R&T CELL)	MANAGER (FINANCE)	AT-TARADING, ATHAGARH, CUTTACK
164	19080	SIBA KUMAR PATNAIK (I/C STORE DIVN.BBSR)	MANAGER (FINANCE)	PLOT NO.43/C,ASHOKNAGAR,DIST-KHURDA
165	21285	PRADEEP KUMAR PATTANAYAK	MANAGER (FINANCE)	TELENGA SAHI,ANGURGADIA,BALASORE
166	20895	RABI NARAYAN DAS(I/C GCC 90L)	MANAGER (FINANCE)	AT-DIHABALIANATA,BENUPUR,BALIANATA,KHURDA
167	55969	SANKARSAN SAHOO I/C DISCOM MONITORING ACTIVITIES)	MANAGER (FINANCE)	AT/PO-BHARALO PO-RAHAMA DIST-JAGTSINGHPUR
168	44550	ANITA MAHAPATRA(I/C D.B CELL&PA CELL)	MANAGER (HRD)	PLOT NO.240/14, AERODRUM AREA, BHUBAESWAR, KHURDA
169	48037	RAM PRASAD PADHI	MANAGER (LAW)	AT-HEMAGIRI STREET PO-JEYPORE DIST-KORAPUT
170	40239	SANJEEV KUMAR MOHANTY	MANAGER (MECHENICAL)	VILL-LINK ROAD,PO-BADAMBADI,DIST-CUTTACK
171	40255	JHADESWAR NAYAK	MANAGER (MECHENICAL)	AT-PADHUANPADA, PO-KARAJIA ROAD, DIST-BALASORE
172	35992	RAMANI KANTA PATEL	MANAGER (MECHENICAL)	AT/PO-KUNTARA, KUSUMI, SAMBALPUR
173	60699	SATYA RANJAN SARANGI(DEPUTED TO GRIDCO)	MANAGER (MECHENICAL)	PURUNABASTI,CHAKRADHARPUR,SINGHBHUMI,W.B
174	40297	DURBA RANJAN SINGHBABU	MANAGER (TELECOM)	AT/PO-SARAGADI,KHARIAR,NUAPADA
175	28648	KARUNAKAR PRADHAN	MANAGER (TELECOM)	AT/PO-MANIKULA,BALASORE
176	28750	SARAT CHANDRA PANIGRAHI	MANAGER (TELECOM)	AT/PO-LAXMIPUR,KHOLAKHOLI,GANJAM
177	35202	GURU CHARAN SAHOO	MANAGER (TELECOM)	AT-JASHORE,PS/DIST-KENDRAPARA
178	35989	HEMANT KUMAR SAMANTRAY	MANAGER (TELECOM)	AT/PO-BEGUNIA, DIST-KHURDA
179	28664	UMESH CHANDRA MOHANTY	MANAGER (TELECOM) TA TO GM	AT-MADHUANPADA,PO-BALASORE,BALASORE
180	24231	PRASANTA KUMAR DAS(A)	SGM (ELEC)	PLOT NO198,SAHID NAGAR,BHUBANESWAR
181	54889	PRADIPTA KUMAR BEHURA	SGM (ELEC) C.P.C	AT/PO-SAMADHIPATNA,CUTTACK-753003
182	24244	CHINMAYA RAKSHIT	SGM (ELEC) CP	AT-SUELPU,PO-MOTIGANJ,DIST-BALASORE
183	23599	RANJIT DAS	SGM (ELEC) PP	SARBODAYA NAGAR,PURI

184	23630	BIJAYA KUMAR TRIPATHY (I/C O&M)	SGM (ELEC) T&D	SATABDI VIHAR,BIDANASI,CUTTACK
185	23643	ASISH KUMAR SARKAR	SGM (ELEC) TP & C	AT-RAMABALLOV ROAD,PURI
186	55493	BRAJABANDHU SAHOO	SGM (FINANCE)	RAMPA,BARI,JAJPUR

REMUNERATION & COMPENSATION

(MANUAL. 10)

ALL UPDATED MAN IN POSITION AS ON 01.05.2012 UNDER GRIDCO/OPTCL					
<u>MANAGER & ABOVE RTI MANUAL-X</u>					
<u>SL NO</u>	<u>EMP ID</u>	<u>NAME OF THE EMPLOYEE</u>	<u>DESIGNATION</u>	<u>BASIC PAY</u>	<u>GRADE PAY</u>
1	37587	PRABODHA KUMAR MISHRA	AGM (ELEC)	28160	6600
2	37222	UMAKANTA SAHOO	AGM (ELEC)	28340	6600
3	38542	BIKRAM KESHORI SINGH	AGM (ELEC)	15600	6600
4	37628	ASHOK KUMAR BEHURA	AGM (ELEC)	27320	6600
5	38414	GOPAL CHANDRA PATI	AGM (ELEC)	25430	6600
6	38513	SANKAR KRISHNA	AGM (ELEC)	25430	6600
7	54892	BRUNDABAN JETHI	AGM (ELEC)	28340	6600
8	61753	PRATAP CHANDRA MOHAPATRA	AGM (ELEC)	27730	6600
9	33435	NILAMBAR DASH (I/C 419)	AGM (ELEC)	28260	6600
10	38063	LAXMIKANTA MOHANTY	AGM (ELEC)	27140	6600
11	33448	KESHAB CHANDRA NAYAK	AGM (ELEC)	28160	6600
12	37800	BHUBANESWAR PANDA(I/C E&MR S/D RAYAGADA &STORES DIVN. RGD)	AGM (ELEC)	27340	6600
13	33451	UTTAM KUMAR SAMAL	AGM (ELEC)	27860	6600
14	37082	SACHINDRA PATTNAIK	AGM (ELEC)	27360	6600
15	35749	GANGADHAR PATEL	AGM (ELEC)	28900	6600
16	35723	KAILASH KUMAR AGARWALA	AGM (ELEC)	26680	6600
17	34487	SANGRAM KESHARI DAS	AGM (ELEC)	28160	6600
18	37293	PARTHA SARATHI PATRA	AGM (ELEC)	28900	6600
19	37123	LALATENDU NAYAK	AGM (ELEC)	28340	6600
20	35710	BIJAYA KUMAR SAHOO	AGM (ELEC)	27400	6600
21	37631	LINGARAJ DASH	AGM (ELEC)	15600	6600
22	36915	PURNENDU SEKHAR SAHOO	AGM (ELEC)	27680	6600
23	37871	AMAR NATH MOHANTY	AGM (ELEC)	28160	6600
24	33477	NIMAIN CHARAN SWAIN	AGM (ELEC)	28900	6600
25	38469	BICHITRA NANDA NAYAK	AGM (ELEC)	27670	6600
26	38638	MANAS RANJAN ROUL	AGM (ELEC)	25430	6600
27	35752	SURENDRA PATEL	AGM (ELEC)	26670	6600
28	37884	BIKASH CHANDRA PANDA (I/C O&M DIVN. THERUVALLI)	AGM (ELEC)	27,400	6,600
29	34560	BISWAS NARAYAN BOHIDAR	AGM (ELEC)	27400	6600
30	33620	PRADIPTA KUMAR MOHAPATRA	AGM (ELEC)	28160	6600
31	35864	BIBHUDA NANDA UDGATA	AGM (ELEC)	29970	6600
32	61964	PRASANTA KUMAR NAYAK	AGM (ELEC)	26070	6600

33	37590	MADHUSUDAN PANI (I/C STORES DIVN BBSR)	AGM (ELEC)	28160	6600
34	35426	SANDEEP KUMAR PURI	AGM (ELEC)	26670	6600
35	37181	SHIBA SANKAR NAYAK(EXECUTIVE ASST.TO DIR.(COMM))	AGM (ELEC)	26700	6600
36	37149	ASHOK KUMAR SAMANTRAY(I/C GRIDCO DATA CENTER)	AGM (ELEC)	28380	6600
37	39718	RAJ KISHORE PRADHAN	AGM (ELEC)	25430	6600
38	36973	SRIKANTA KUMAR CHOUDHURY(DEPUTED TO GRIDCO)	AGM (ELEC)	28900	6600
39	33604	JAYANTA KUMAR PARICHHA	AGM (ELEC)	26410	6600
40	38472	SANKAR PRASAD PADHI (DEPUTATED TO CESU 4329/17.03.2012)	AGM (ELEC)	23330	6600
41	57637	SWARUP KUMAR HARICHANDAN	AGM (ELEC) EXECUTIVE ASST.	26080	6600
42	37040	NIHAR RANJAN PRADHAN	AGM (ELEC) EXECUTIVE ASST.	28900	6600
43	53022	UMESH KUMAR GUPTA(I/C SLDC MANCHESWAR)	AGM (FINANCE)	26410	6600
44	55998	GHANASHYAM KHATUA	AGM (FINANCE)	25920	6600
45	52830	SAMBIT KUMAR SAMANTA	AGM (FINANCE)	22330	6600
46	57877	BIBHUTI BHUSAN NAYAK	AGM (FINANCE)	22330	6600
47	49159	SRIKANTA KUMAR SAHOO(DEPUTED TO GRIDCO)	AGM (FINANCE)	23700	6600
48	36030	BIDYADHAR BHATTA(DEPUTED TO GRIDCO)	AGM (FINANCE)	25920	6600
49	42572	SUBHENDU DASH (DEPUTATED TO GRIDCO)	AGM (FINANCE)	26410	6600
50	42444	AJAYA KUMAR DAS	AGM (HRD) I	27140	6600
51	54595	SANJUKTA BEHERA (I/C PENSION&NODAL OFFICER LEGAL,IR,HR,PENSION)	AGM (HRD) II	27140	6600
52	42415	ANITA SATPATHY	AGM (HRD) III	27140	6600
53	37602	AJAY PRASAD PANDA	AGM (HRD) IV	28580	6600
54	38795	RASMI KUMAR PANDA	AGM (HRD) V	27140	6600
55	42767	CHANDRA SEKHAR PRADHAN(I/C MPPR,D.B CELL)	AGM (HRD) VI	27140	6600
56	55550	PRIYADARSAN PATRA	AGM (IT)	26670	6600
57	25676	GOLAK BIHARI PANDA	AGM (IT)	31860	6600
58	47056	GHANA SHYAM PANIGRAHI(DEPUTED TO GRIDCO)	AGM (LAW)	23700	6600
59	38357	JAGANNATH PRASAD MOHANTY, ASST. TO SR GM(PS)(DDO)	AGM (MECHENICAL)	28160	6600
60	38766	PRADIPA KUMAR MISHRA	AGM (MECHENICAL)	26360	6600
61	28635	DEBARAJ RATH	AGM (TELECOM)	29180	6600
62	63306	SUSMITA DASH (REQUITATED TO GRIDCO)	ASST.COMPANY SECRETARY(MGR. RANK)	15600	6600
63	23445	JITENDRIYA PRASAD DAS	CGM (ELEC)	46420	9000
64	21128	KISHORI MOHAN PARIDA	CGM (ELEC) O&M	44780	9000
65	55547	RAMESH CHANDRA MISHRA	CGM (FINANCE)	48050	9000
66	55097	MANGALAGIRI ANANTA RAO	CGM (IT)	46440	9000
67	64444	HEMANT SHARMA (IAS) (I/C GRIDCO)	CMD	46330	10000
68	55646	PRASANTA KUMAR DAS	COMPANY SECRETARY (SGM RANK,19.10.2011)	43210	8800
69	33422	MANORANJAN CHOUDHURY	DGM (ELEC)	27400	6600
70	36663	UPENDRA NATH MISHRA	DGM (ELEC)	29970	7600
71	33464	RABI PRASAD NAYAK	DGM (ELEC)	28900	6600
72	36999	PRADIPTA KUMAR DASH	DGM (ELEC)	29970	7600

73	36957	RADHA RAMAN PANDA	DGM (ELEC)	28900	6600
74	33493	BIMAL PRASAD MISHRA	DGM (ELEC)	29970	7600
75	33547	MANORANJAN MOHANTY	DGM (ELEC)	29640	6600
76	54780	BAISHNABA CHARAN PADHIHARY	DGM (FINANCE)	28160	7600
77	55518	GOBIND AGARWALLA (ERP FINANCE MODULE)	DGM (FINANCE)	30,470	7,600
78	26897	BIPIN BIHARI SATAPATHY	DGM (TELECOM)	31490	7600
79	66112	PRASANTA KUMAR PRADHAN	DIRECTOR (COMMERCIAL)		
80	69069	SUSANTA KUMAR DAS	DIRECTOR (ENGG.)	51020	10000
81	55620	BIBHU PRASAD MOHAPATRA(I/C GM(FIN)OPTCL14.07.2011)	DIRECTOR (FIN. & CA)	43240	9000
82	64499	SANTANU KUMAR RATH	DIRECTOR (HRD)	79000	0
83	56081	BANSHIDHAR OJHA(DEPUTED TO GRIDCO)	ECONOMIST(DGM RANK)	30380	7600
84	63434	SAYAD SULEMAN ALI (I/C CWD BURLA,LOOK CWC BBSR)	EXECUTIVE ENGINEER(CIVIL)	*	*
85	61638	SANJAY KUMAR HOTA(I/C GRID CO-ORDINATION COMMITE 90L)	GM (ELEC)	37400	8700
86	24794	RABINDRA KAMILA	GM (ELEC)	38790	8700
87	25535	JITENDRA BASTIA	GM (ELEC)	38790	8700
88	62015	KISHORE CHANDRA MISHRA	GM (ELEC)	22320	7600
89	25692	BUDHESWAR NANDA(I/C TTPS)	GM (ELEC)	37400	8700
90	24778	ADITYA NARAYAN SAR	GM (ELEC)	38790	8700
91	60871	AJAYA KUMAR MOHANTY	GM (ELEC)	40220	8700
92	27737	PRAFULLA CHANDRA TRIPATHY	GM (ELEC)	29240	7600
93	26615	SAROJA KANTA PARIDA	GM (ELEC)	37400	8700
94	25056	LAXMIDHAR MOHAPATRA(DEPUTED TO GRIDCO)	GM (ELEC)	37400	8700
95	55576	SRINIVAS MOHAPATRA	GM (FINANCE)	41690	8700
96	55505	NIRANJAN SAHOO	GM (FINANCE)	37400	8700
97	61696	KRUSHNA CHANDRA BEHERA(I/C STORES CIRCLE BBSR)	GM (MECHENICAL)	37400	8700
98	62440	RAJ KISHORE DAS	GM (TELECOM)	37400	8700
99	63418	SYAMA PRASAD PATTANAIAK(OAS-I)	LAND OFFICER	20630	5400
100	40309	SARBA PRIYA JETHY	MANAGER (ELEC)	25350	6600
101	38906	PRASANT KUMAR DAS (B)	MANAGER (ELEC)	26020	6600
102	41252	PRASANT KUMAR SATPATHY	MANAGER (ELEC)	25,350	6,600
103	38399	SUBRAT KUMAR MITRA	MANAGER (ELEC)	25430	6600
104	35707	PRASANTA KUMAR RATH	MANAGER (ELEC)	26200	6600
105	41278	BISWA RANJAN MISHRA (P.I.O)	MANAGER (ELEC)	25400	6600
106	35778	BIBEKANANDA PANI (SDO)	MANAGER (ELEC)	21840	6600
107	38302	UMESH PRASAD DAS (SDO)(I/C DIVN CHOUDWAR)	MANAGER (ELEC)	25430	6600
108	35822	PADMANAV SWAIN	MANAGER (ELEC)	27660	6600
109	42428	BIJAYA KUMAR DAS (SDO)	MANAGER (ELEC)	25280	6600
110	40958	RABI SANKAR MISHRA	MANAGER (ELEC)	25310	6600
111	42741	CHITARANJAN BEHERA	MANAGER (ELEC)	25270	6600
112	54946	MAYA BANDHU PRADHAN	MANAGER (ELEC)	22360	6600
113	39114	RABI NARAYAN PANDA (SDO)	MANAGER (ELEC)	25350	6600
114	38935	RABI NARAYAN SAHOO (SDO)	MANAGER (ELEC)	25350	6600

115	42387	SUKANTA PANDA	MANAGER (ELEC)	25280	6600
116	39143	SUNKURU SUDHAKAR RAO	MANAGER (ELEC)	25320	6600
117	41533	PRAFULLA KUMAR PATI(I/C EHT © S/D NO-1 BBSR I/C GRID S/D CHANDAKA)	MANAGER (ELEC)	25350	6600
118	62185	MD ZIAL HUDA	MANAGER (ELEC)	25350	6600
119	40396	ATULYA KUMAR PATRA	MANAGER (ELEC)	25400	6600
120	56586	JAYRAM SAHOO (SDO)	MANAGER (ELEC)	25400	6600
121	41223	A.RAMESWAR RAO SUBUDHI (SDO)	MANAGER (ELEC)	25310	6600
122	44521	SURESH CHANDRA PATRA	MANAGER (ELEC)	21470	6600
123	41306	RAJ KISHORE PARIDA (SDO)	MANAGER (ELEC)	25350	6600
124	35848	RAJAT SEKHAR DAS BHATTAMISHRA (I/C220KV LINE S/D THERUVALLI,426)	MANAGER (ELEC)	27280	6600
125	57736	JASOBANTA NARAYAN CHOUDHURY	MANAGER (ELEC)	25280	6600
126	41294	LAXMI KANTA MISHRA (SDO)	MANAGER (ELEC)	25430	6600
127	42613	SUDIPTA SENGUPTA (SDO)	MANAGER (ELEC)	25400	6600
128	38948	SANBHU NATH SAHA (SDO)	MANAGER (ELEC)	25350	6600
129	38951	TIKANATHA HARIJAN(SDO) (I/C GRID S/S BUDHIPADAR)	MANAGER (ELEC)	25350	6600
130	35806	ADIT KUMAR SHARMA(SDO)	MANAGER (ELEC)	26660	6600
131	38782	MANOJ KUMAR DAS(SDO)	MANAGER (ELEC)	25350	6600
132	39127	PRADIPTA KUMAR BHUYAN	MANAGER (ELEC)	25350	6600
133	40325	SWAPANA KUMAR TRIPATHY	MANAGER (ELEC)	25320	6600
134	41281	RABINDRA KUMAR SAHOO (I/C S/D JAJPUR ROAD)	MANAGER (ELEC)	25350	6600
135	60660	NIKUNJA BIHARI MOHAPATRA	MANAGER (ELEC)	25320	6600
136	40312	SARADA KANTA SATPATHY (SDO)	MANAGER (ELEC)	25400	6600
137	38360	SADANANDA PATRA (SDO)	MANAGER (ELEC)	25430	6600
138	61654	RABINDRA NATH MOHAPATRA	MANAGER (ELEC)	25350	6600
139	44831	SANTOSH KUMAR PRADHAN	MANAGER (ELEC)	22320	6600
140	41546	SANJAYA KUMAR DUTTA	MANAGER (ELEC)	25320	6600
141	42501	SUDHANSU SEKHAR NANDA	MANAGER (ELEC)	25310	6600
142	41265	PRADIPTA KUMAR NANDA (SDO)(I/C SDO T/L S/S DUBURI)	MANAGER (ELEC)	25320	6600
143	42390	BIBHU PRASAD MOHAPATRA (SDO)	MANAGER (ELEC)	25280	6600
144	41195	UPENDRA KUMAR PATI	MANAGER (ELEC)	25400	6600
145	38919	SAKTI PRASAD DAS	MANAGER (ELEC)	25350	6600
146	55026	PRADEEP KUMAR DASH(B)	MANAGER (ELEC)	25280	6600
147	42626	GOPAL KRUSHNA PADHI	MANAGER (ELEC)	25400	6600
148	35765	SARAT KUMAR DAS	MANAGER (ELEC)	27660	6600
149	39945	TAPAS PATTANAIK (I/C SAFETY)	MANAGER (ELEC)	25320	6600
150	42600	JAYANTA KUMAR SENAPATI	MANAGER (ELEC)	25400	6600
151	38779	SUSHANTA KUMAR PANIGRAHI	MANAGER (ELEC)	25400	6600
152	39130	PRASANTA KUMAR PANDA(I/C BILLING WORK R&T)	MANAGER (ELEC)	25320	6600
153	38373	GYANARANJAN PANIGRAHI	MANAGER (ELEC)	21010	5400
154	62002	SAMIR KUMAR MOHANTY	MANAGER (ELEC)	25350	6600
155	60686	UMAKANTA SAHOO(DEPUTED TO GRIDCO)	MANAGER (ELEC)	25350	6600
156	37839	NURUDDIN KHAN(DEPUTED TO GRIDCO)	MANAGER (ELEC)	26080	6600

157	42402	PRIYABRATA PATNAIK (DEPUTATED TO OERC 16.08.2005)	MANAGER (ELEC)	23480	6600
158	39099	PRASANT MAJHI	MANAGER (ELEC)	25400	6600
159	19712	PURNA CHANDRA DAS (I/C O &M DIVN.CHOUDWAR,I/C CWD BBSR)(A.P.I.O)	MANAGER (FINANCE)	26260	6600
160	21339	RAMESH CHANDRA MISHRA (I/C TELECOM DIVN. RKL.& E&MR DIVN RKL.)	MANAGER (FINANCE)	26790	6600
161	52489	RADHA RANI KHANDELWALLA (I/C O&M CIRCLE J.ROAD)	MANAGER (FINANCE)	21630	6600
162	21371	ATALA BIHARI KHATOI	MANAGER (FINANCE)	25870	6600
163	20882	BRUNDABAN CHANDRA DASH (I/C R&T CELL)	MANAGER (FINANCE)	26790	6600
164	19080	SIBA KUMAR PATNAIK (I/C STORE DIVN.BBSR)	MANAGER (FINANCE)	26260	6600
165	21285	PRADEEP KUMAR PATTANAYAK	MANAGER (FINANCE)	25330	6600
166	20895	RABI NARAYAN DAS(I/C GCC 90L)	MANAGER (FINANCE)	27860	6600
167	55969	SANKARSAN SAHOO I/C DISCOM MONITORING ACTIVITIES)	MANAGER (FINANCE)	21670	6600
168	44550	ANITA MAHAPATRA(I/C D.B CELL&PA CELL)	MANAGER (HRD)	22810	6600
169	48037	RAM PRASAD PADHI	MANAGER (LAW)	22810	6600
170	40239	SANJEEV KUMAR MOHANTY	MANAGER (MECHENICAL)	24340	5400
171	40255	JHADESWAR NAYAK	MANAGER (MECHENICAL)	24340	5400
172	35992	RAMANI KANTA PATEL	MANAGER (MECHENICAL)	26180	5400
173	60699	SATYA RANJAN SARANGI(DEPUTED TO GRIDCO)	MANAGER (MECHENICAL)	24340	5400
174	40297	DURBA RANJAN SINGHBABU	MANAGER (TELECOM)	24340	5400
175	28648	KARUNAKAR PRADHAN	MANAGER (TELECOM)	28870	6600
176	28750	SARAT CHANDRA PANIGRAHI	MANAGER (TELECOM)	29130	6600
177	35202	GURU CHARAN SAHOO	MANAGER (TELECOM)	25240	6600
178	35989	HEMANT KUMAR SAMANTRAY	MANAGER (TELECOM)	26180	6600
179	28664	UMESH CHANDRA MOHANTY	MANAGER (TELECOM) TA TO GM	28480	6600
180	24231	PRASANTA KUMAR DAS(A)	SGM (ELEC)	41690	8800
181	54889	PRADIPTA KUMAR BEHURA	SGM (ELEC) C.P.C	43210	8800
182	24244	CHINMAYA RAKSHIT	SGM (ELEC) CP	40220	8800
183	23599	RANJIT DAS	SGM (ELEC) PP	41690	8800
184	23630	BIJAYA KUMAR TRIPATHY (I/C O&M)	SGM (ELEC) T&D	41690	8800
185	23643	ASISH KUMAR SARKAR	SGM (ELEC) TP & C	41690	8800
186	55493	BRAJABANDHU SAHOO	SGM (FINANCE)	46380	8800

ALL REVISED 7th WAGE BOARD SCALE OF PAY

NON-EXECUTIVE			NEW PAY SCALE 31.03.2009		
SL.NO.	SKILL/ CATEGORY	GRADE	SCALES OF PAY	PAY BAND	GRADE PAY
1	2	3	4	5	6
1	UNSKILLED	A01 & T01	4440-10200	S-1	1750
2	SEMI SKILLED-B	A02 & T02	5200-20200	PB-1	1900
3	SEMI SKILLED-A	A03 & T03	5200-20200	PB-1	2100
4	SKILLED-C	A04 & T04	5200-20200	PB-1	2400
5	SKILLED-B	A05 & T05	5200-20200	PB-1	2500
6	SKILLED-A	A06 & T06	5200-20200	PB-1	2800
7	HIGHLY-SKILLED-B	A07 & T07	5200-20200	PB-1	3300
8	HIGHLY-SKILLED-A	A08 & T08	9300-34800	PB-2	4200
9	SUPERVISORY-B	A09 & T09	9300-34800	PB-2	4200
10	SUPERVISORY-A	A10 & T10	9300-34800	PB-2	4200

EXECUTIVE			NEW PAY SCALE 31.03.2009		
SL.NO.	SKILL/ CATEGORY	GRADE	SCALES OF PAY	PAY BAND	GRADE PAY
1	2	3	4	5	6
1	M.T	E01	15000/- (CONSOLIDATED)		
2	J.M / S.O	E02	9300-34800	PB-2	4200
3	A.M	E03	9300-34800	PB-2	4600
4	D.M	E04	9300-34800	PB-2	5400
5	MANAGER	E05	15600-39100	PB-3	6600
6	A.G.M	E06	15600-39100	PB-3	6600
7	D.G.M	E07	15600-39100	PB-3	7600
8	G.M	E08	37400-67000	PB-4	8700
9	S.G.M	E09	37400-67000	PB-4	8800
10	C.G.M	E10	37400-67000	PB-4	9000
11	DIRECTOR	E11	37400-67000	PB-4	9000
12	CMD / MD	E12	37400-67000	PB-4	10000
13		GOVT. DEPUTATION STAFF			

BUDGET PROVISION

(MANUAL. 11)

ABSTRACT OF R & M (Account Head wise)- 74 Group					
Head of A/c	A/c Code	Expen. For 2010-11	Budget 2011-12 (BE)	Budget 2011-12 (RE)	BE 2012-13
1	2	3	4	5	6
Repairs & Maintenance -Plant and Machinery	74.1	1430.19	2620.69	2070.45	868.90
Repairs & Maintenance - Sub-stations	74.1	692.94	1841.00	2810.80	1731.02
Repairs & Maintenance -Buildings	74.2	94.87	193.02	296.34	439.46
R& M - Civil works (Roads, Hydraulic Works & others)	74.3	9.65	37.89	36.23	19.56
R& M to Electrical Wiring, light, fan etc.	74.4	0.00	0.00	0.00	80.00
R & M - lines, cable network, etc.	74.5	302.90	2534.40	1419.34	1105.40
R & M - Vehicles (Light)	74.6	19.20	28.02	27.44	29.35
R & M - Vehicles (Heavy)	74.6	4.20	12.85	12.66	10.74
R& M - Furniture and Fixtures	74.7	30.15	33.07	49.05	9.64
R& M - Office Equipment	74.8	37.36	199.06	205.53	205.93
Material procurement / Stores Adjustments		210.32			5000.00
T o t a l		2831.79	7500.00	6927.84	9500.00

Annexure-D

ABSTRACT OF EMPLOYEE COST (A/C HEAD WISE)-----75 GROUP

Head of A/c	A/c Code	Expen. For 2010-11	Budget 2011-12 (BE)	Budget 2011-12 (RE)	BE 2012-13
1	2	3	4	5	6
Salaries	75.1	7105.94	6845.10	7130.20	7151.44
Remuneration paid through outside agency	75.199	247.52	350.00	200.00	200.00
D.A	75.3	1435.79	3217.49	3734.31	4453.93
Other Allowance	75.4	37.00	47.84	56.89	58.76
Bonus	75.5	5.80	6.71	1.26	1.38
Medical Allowance (I)	75.611	251.70	342.89	286.85	309.17
Medical Reimbursmnt (II)	75.611	84.72	67.60	109.47	80.45
L.T.C	75.612	24.77	77.65	55.50	59.00
H.R.A	75.614	787.89	967.10	895.24	978.39
U.U.L.S	75.617	13.76	0.00	0.00	0.00
Honararium	75.618	0.00	0.83	0.50	0.50
Pmnt. under W.C Act.	75.619	0.44	1.03	2.00	2.00
Ex-gratia	75.621	0.13	0.00	38.00	0.70
Other staff Cost (Conv. Reimb.)	75.690	70.43	80.99	92.31	145.70
Recreation Expenses	75.705	0.20	2.22	1.24	1.24
Medical Expenses(for Power Hospital)	75.706	2.56	6.20	5.00	6.00
Uniform & Leveries	75.707	22.09	25.45	345.73	154.74
Other Staff Welfare Exp.	75.790	2.65	3.94	7.50	6.77
Sports Expenses	75.791	2.94	6.00	10.00	12.00
Pension Cont. for Deput.	75.808	0.00	0.00	0.63	0.00
Leave salary Cont. Deput.	75.809	0.00	0.00	2.22	0.00
Other Terminal benefit (UULS)	75.890	1317.22	0.00	0.00	0.00
Gross Total		11413.55	12049.04	12974.85	13622.16

Annexure-E					
ABSTRACT OF ADMINISTRATIVE & GENERAL COST (A/C HEAD WISE)--76 GROUP					
Head of A/c	A/c Code	Expen. for 2010-11	Budget 2011-12 (BE)	Budget 2011-12 (RE)	BE 2012-13
1	2	3	4	5	6
Rent	76.101	11.53	19.49	99.43	22.73
Rates & taxes	76.102	3.84	7.34	16.49	9.32
Insurance on fixed Assets	76.104	1.17	1.59	2.94	3.63
Other Insurance	76.109	0.62	2.04	4.31	4.84
Telephone & Trunk calls	76.111	34.51	49.26	157.18	119.53
Postage & Telegrams	76.112	4.83	15.73	8.46	8.85
Telex & Teleprinter	76.113	0.02	1.53	1.04	1.05
Courier charges	76.114	0.22	0.79	0.91	0.93
Legal charg.& stamp fees for works	76.121	0.40	2.72	3.12	2.86
Legal charges - others	76.122	106.59	143.89	143.50	143.74
Consultancy charges	76.123	27.69	35.85	31.20	37.16
Audit fees	76.126	1.25	5.05	5.00	5.00
Tech. Documn. & design charges	76.128	0.00	0.25	0.30	0.30
Other Professional charges	76.129	20.90	35.00	32.00	36.00
T.A & D.A to Internal Auditors	76.130	0.00	3.64	4.00	4.00
Conveyance Charges	76.131	0.00	4.01	4.01	4.01
Travelling Charges	76.132	174.22	183.40	203.46	202.30
Transport Charges	76.134	0.29	0.38	0.38	0.48
Vehicle running exp. (POL for LMV)	76.136	45.03	68.20	61.44	62.35
Hire Charges of Vehicle	76.137	118.33	155.31	203.11	246.50
Vehicle Licn.,Regn.& Road taxes	76.138	5.38	11.15	10.03	8.69
Audit expenses	76.150	3.66	5.00	7.00	7.05
Fees & Subscription	76.151	0.34	20.01	16.01	16.01
Books & Periodicals	76.152	1.09	6.09	3.02	3.07
Printing (I)	76.153	19.14	33.96	34.26	34.26
Stationary (II)	76.153	6.60	15.58	15.58	15.98
Advertisement (other than purchase)	76.155	29.10	29.04	35.39	35.50
Contribution to charities	76.157	6.00	2.00	10.00	5.00
Electricity charges	76.158	115.04	198.42	194.78	182.22
Inspection fees	76.159	154.30	192.83	220.18	192.33
Water charges	76.160	32.99	17.60	16.55	17.43
Training charges	76.161	34.13	80.25	50.36	49.64
Entertainment	76.162	15.33	20.78	5.79	5.81
Licence & related fees	76.163	0.01	120.03	100.07	

					125.07
Gardening & Horticulture Exp.	76.164	2.18	6.06	3.97	4.09
Office upkeep & Maint. Exp.	76.165	25.57	38.35	49.37	50.58
Official meeting expenses	76.166	0.92	2.93	1.21	1.48
Revenue stamp	76.168	0.00	0.00	0.00	0.00
Watch & ward expenses	76.169	1035.59	1252.79	90.45	94.28
Misc. charges (I)	76.190	24.95	57.17	27.94	30.48
Misc. charges computer (ii)	76.190	0.53	19.70	7.22	8.43
Testing charges for Cap. Equip.	76.221	0.06	0.82	0.77	0.87
Vehicle running exp. (POL for HMTV)	76.240	7.85	17.55	15.06	16.20
Transport charg. to outsiders	76.245	0.19	0.40	0.40	0.45
Loading - unloading to outsiders	76.249	0.56	1.40	1.20	1.00
Octroi on capital equipment	76.250	0.00	0.05	0.05	0.05
Adv. for purchase of Capital Equip.	76.260	0.83	25.47	22.70	25.20
Advertisement (Others)	76.261	13.10	11.09	8.94	6.46
Other material related expenses	76.299	0.68	1.20	1.80	2.30
Other Headquarters adjustments		1292.84			
T o t a l 76 group		3380.36	2923.19	1932.37	1855.50
Items of small value written off	77.610	0.01	0.06	0.23	0.29
Bank commission for purchase of DD	78.883	1.00	3.02	2.70	3.03
Bank charges (incidental charges)	78.884	0.12	0.59	0.57	0.57
Other Bank charges	78.885	0.39	1.32	1.22	1.47
T o t a l 77 & 78 group		1.52	5.00	4.72	5.36
Total (76+77 &78) group		3381.88	2928.19	1937.09	1860.86

SUBSIDY & PROGRAMMES
MANUAL - 12

OPTCL do not get any subsidy from Government of Orissa.

CONCESSIONS & PERMITS
(MANUAL -13)

No concession, permits, or authorization are granted on behalf of OPTCL to any beneficiary.

INFORMATION IN ELECTRONICS FORM
(MANUAL -14)

The following major areas of the organization are computerized:

Payroll Information system (CPIS)

Financial System (GF2, TF2,CMIS)

Gridco Energy Management System (GEMS)

ERP (To be launched very shortly)

All necessary information about the Organization are available in the official web site i.e. www.optcl.co.in, and www.sldcorissa.org.in.

Efforts are being made to incorporate more and more information in the official web sites.

Tender Advertisement: All related tender with respect to OPTCL, GRIDCO and SLDC are hosted in the Tab page “ Tenders” of the related web sites.Information available to public as under.Office Library Through News paper Exhibition Notice Board Printed Manual Available Website of the Public Authority System of issuing of copies of document .

Facilities for Citizens **(Manual -15)**

- Office Library
- Through News paper
- Exhibition
- Notice Board
- Printed Manual Available
- Website of the Public Authority
- System of issuing of copies of document

PIOs Details
(Manual. 16)

NAME OF THE 1ST APPELLATE AUTHORITY,PIO & APIO OF OPTCL.

SI.No.	Name	Designation	1st.App.Auth.	PIO/APIO	Telephone No.
I	OPTCL HEAD QTRS. OFFICE, BHUBANESWAR				
1	M.Ananta Rao	CGM (IT)	1st App.Auth.		9437044830
2	Ajay Prasad Panda	AGM(HRD)		PIO	0674-2541633 9437076874
3	Smt. Madhumita Swain	DM(HRD)		APIO	9861036915
4	Smt.Itishree Sahoo	DM(HRD)		APIO	9437085001
5	Manas Ranjan Lenka	DM(F)		APIO	9437304104
II	SR.G.M.(TP&C), BHUBANESWAR.				
1	Asish Kumar Sarkar	Sr.GM(TP&C)	1st App.Auth.		2546341/9437046353
2	Lingaraj Dash	A.C.E.(TP&C))		PIO	2540970/9437081370
3	Surendra Nayak	Gr.II Asst.		APIO	750449721
III	SR.G.M. (PS)SLDC,BBSR				
1	Prashanta Kumar Dash	G.M(Electl)	1st App.Auth.		2748547 9437041885
2	Santosh Ku. Das	G.M.(Electl)		PIO	2748089 9437000261
3	Pradeep Ku. Das	DGM(Elec)		APIO	2748827 9861085498
4	Jagannath Prasad Mohanty	Asst.to Sr.GM(PS)		APIO	2748190
5	Sarat Ku. Acharya	LD Asst.		APIO	
IV	S.E.Civil Works Circle, Bhubaneswar.				
1	S.S.Alli	S.E.Civil	1st.App.Auth.		0674-2545489 9937033486
2	Ranjan Kumar Singh	AM(Civil)		PIO	9090157798
3	Akshaya Ku. Sahoo	Clerk-B		APIO	9861462870
4	Lokanath Mallik	Clerk-B		APIO	8018592386
V	EHT(O&M) CIRCLE,CUTTACK				
1	B.R.Mishra	Manager(EI.)		PIO	2300226
2	P.C.Das	Mgr.(Fin.)		APIO	2300226
VI	TELECOMUNICATION CIRCLE, BHUBANESWAR.				

1	Rajkishore Das	DGM(Tel.)	1st App.Auth.		0674-2542403/9437353933
2	U.C.Mohanty	T.A.to G.M(TC)		PIO	0674-2542403/9437563355
3	Sri Bipin Bihari Satapathy	Manager(TC)		APIO	0674-2542403/9437469925
4	Sri Binaya Kumar Mallick	AM(TC)		APIO	0674-2542403/9437047064
VII	EHT(O&M) CIRCLE, CHAINPAL.				
1	B.NANDA	D.G.M.(El.)	1st App.Auth.		06760-249064 9437047064
2	Prasant Ku.Pani	D.M.(El.)		PIO	06760-249064
3	BIPINI BIHARI NAYAK	J.M.(F)		APIO	06760-249064
VIII	EHT(O&M) CIRCLE, JAJPUR ROAD				
1	Jyana Ranjan Nayak	G.M.(El.)	1st App.Auth.		06726-220965 9437570374
2	Bijaya Kumar Sahoo	AGM		PIO	06726220218/9437577218
IX	EHT(O&M) DIVISION, BALASORE.				
1	Rabindra Kamilla	AGM(El.)		PIO	06782-264711 9437552811
2	Partha Sarathi Patra,Mgr(El.)	TLS/D.,Balasore		APIO	06782-263565
3	Govind Ch.Sethi,SDO(I/C)	TLS/D.,Bbadrak		APIO	06784-240513
4	Depak Ku.Senapati,SDO(El.)	TL S/D.,Jaleswar		APIO	06781-222330
5	Hiralal Parida, SDO(I/C)	TL S/D.,Baripada		APIO	06792-252376
6	Pirthi Tudu,SDO(I/C)	TL S/D.,Rairangpur		APIO	06794-222098
7	Rabinarayan Panda, SDO(I/C)	TL S/D.,Soro		APIO	06788-221074
X	EHT(O&M) DIVISION, BHUBANESWAR,				
1	Manoranjan Mohanty	AGM(El.)	1st App.Auth.		0674-2542287 9437960458
2	Bijay Ku.Panda	A.M.(El.)		PIO	0674-2542287
3	Jatindra Nath Mishra	Head Clerk		APIO	0674-2542287
XI	EHT CONSTRUCTION DIVISION, CUTTACK				
1	P.C.Das	AGM(EL)	1st.App.Auth.		0671-2365570
2	B.C.Das	A.M.(F)		PIO	0671-2365570
XII	EHT(CONSTRUCTION) CIRCLE, BHUBANESWAR				
1	P.K.DAS	DGM(Elec)	1st App.Auth.		0674-2546158
2	Sakti Prasad Das	TA to GM		PIO	0674-2547463
3	Manu Charan Behera	Head Clerk		APIO	

XIII	EHT(CONST)DIVN. JEYPORE				
1	B.N.Nayak	AGM(ELEC)	1st App.Auth.	PIO	943276938
2	N. Adhikary	D.M.(Electl)		APIO	06854-232682
XIV	E&MR DIVISION, BHUBANESWAR.				
1	B.Jethi	AGM(EI.)		PIO	0674- 2540920/9437044920
2	J.K.Dutta	Steno		APIO	9937619636
XV	EHT(CONSTRUCTION) CIRCLE, SAMBALPUR				
1	Rajanikanta Mohanty	G.M.(EI.)	1st App.Auth.		06764-230743 9437178743
2	Prabeer Kumar Mallick	DM(EI)		PIO	9438167670
XVI	CIVIL WORKS DIVISION, BHUBANESWAR				
1	Sri S.S.Ali	E.E.(Civil)	1st.App.Authority.		9937033486
2	P.C. DAS	Manager(F)		PIO	9437033486
3	Deepak ku. Mohapatra	J.E.(Civil)		APIO	9439950543
4	C.Mallia	Clerk-B		APIO	9861377349
XVI	EHT(O&M)DIVN., ROURKELA				
1	U.K.SAMAL	AGM(EL)	1st App.Auth.		9437499859
2	R.C.MISHRA	Manager(F)		PIO	9437149530
3	B.N.Nayak	Clerk-B		APIO	9777474979
XVIII	EHT(O&M) CIRCLE, JEYPORE				
1	A.N.Sar	GM(EI.)	1st App.Auth.		9437052719
2	Damodar Mishra	D.M.(F)		PIO	9437376845
3	Sarat Ch. Behera	Head Clerk		APIO	9438476444
XVIII	GM, STORES & SERVICES CIRCLE, BHUBANESWAR				
1	S.K.Parida	DGM(Elec)	1st App.Auth.		2547185/9437141036
2	M.S.Pani	AGM(EL)		PIO	2541106/9437309678
3	S.K.Patnaik	Manager(Finance)		APIO	9437370444
XIX	E&MR DIVISION, BERHAMPUR				
1	P.C.Das	AGM(EL)		PIO	9437113623 0680- 2270623
2	A.K.Swain	A.M.(EI.)		APIO	0680-2270623
XX	EHT(O&M) CIRCLE, BURLA				
1	J.BASTIA	G.M.(EI.)	1st App.Auth.		9437080706
2	M.R.ROUL	Manager(EI.)		PIO	2430570
3	Purna Chandra Das	Dy.Mgr.(F)		APIO	2430570

XX	TELE-COMN.DIVISION, MERAMUNDALI				
1	R.N.Sahoo	Manager	1st App.Auth.		06760-249314/ 9438100167
2	J. Nanda	Asst.Manager		PIO	9439409100
3	P.Parida	Head Clerk		APIO	06760-249925 9853285955
4	D. Tripathy	Clerk-B		APIO	9937161980
XXI	EHT(O&M) DIVISION, JAYANAGAR, JEYPORE				
1	R.R.Panda	AGM(EI.)	1st App.Auth.		06854-231635 9437575390
2	L.D.Parida	A.M.(F)		APIO	9938676230
3	Mis.J.R.Pradhan	A.M.(EI.)		PIO	9437337684
XXII	EHT(O&M) DIVISION, BURLA				
1	Sachindra Pattnayak	AGM(EI.)	1st App.Auth.	PIO	2340447 9437567564
2	Smt.Mamata Pradhan	A.M.		APIO	9437126355
3	P.C.Das	DM(F)		APIO	9861083551
XXIII	E&MR DIVISION, ROURKELA				
1	J.BASTIA	G.M.(EI.)	1st App.Auth.		0663-2430160 9437080706
2	S.K.Tripathy	AGM(EI.)		PIO	0661-2641502 9437499859
3	K.M. Jena	AM(EL)		APIO	9437606110
XXIV	EHT(O&M)DIVN., JODA				
1	R.N. MOHAPATRA	AGM(EI.)	1st App.Auth.		9437027875
2	S.K.Pradhan	Manager(EI)		PIO	9438258900
3	M.R.Das	D.M.(EI)		APIO	9437267251
XXV	EHT STORE DIVN.JHARSUGUDA				
1	SURENDRA PATEL	AGM(ELEC)	1st App.Auth.		9437115584
2	SANDESH PATEL	AM9EL)		PIO	
XXVI	EHT(O&M)DIVN.,BHANJANAGAR				
1	NILAMBER DAS	AGM		PIO	9437575261
2	SURESH CH. PATRA	Manager		APIO	9437225507
3	R.K.PARIDA	Manager(EI)		APIO	9438087878
XXVII	EHT(O&M) DIVISION, JAJPUR ROAD				
1	Jyana Ranjan Nayak	GM	1st App.Auth.		9437570374
2	Bijaya Kumar Sahoo	A.M.		PIO	9437577218
3	Susamarani Behera	DM(EI)		APIO	94385500
XXVIII	EHT(O&M) DIVISION, BOLANGIR				
1	KAILASH KU. AGARWAL	AGM(EI)		PIO	06652-250449 9437575449
2	SANTOSH U. BANCHHOR	D.M.(EI)		APIO	9439580917
3	Pitabas Amat	A.M.(EI.)		APIO	9438120754

XXIX	EHT(O&M) DIVISION, CHOUDWAR				
1	P.K. MOHAPATRA	AGM	Ist App.Auth.		0671-2492249 9437022249
2	A.PARAMANIK	DM(EL)		PIO	0671-2492247 9439369439
3	DOLAGOBINDA SWAIN	MT(EL)		APIO	8895817831
XXX	ARREAR CLEARANCE CELL,TALCHER THERMAL				
1	B. NANDA	GM	iST.App.Auth		9437437064
2	B. Sahu	jr.Acct.		PIO	9438004640
3	H.PRUSTI	Steno		APIO	9937259826
XXXI	TELECOMMUNICATION DIVISION, BERHAMPUR.				
1	Karunakar Pradhan	Manager	Ist.App.Auth		9437087795
2	K.Bhaskar Rao Achary	A.M.		PIO	9438854837
3	R.N.Das,	Head Clerk		APIO	9437324554
XXXII	EQUIPMENT & METER RELAY DIVISION, BURLA				
1	G.D.PATEL	AGM		PIO	9437567564
2	P.K.BHUYAN,	Manager		APIO	9437126335
3	P.C.Das	DM(F)		APIO	9861083551
XXXIII	EHT(O&M)DIVN.,RENGALI				
1	SANGRAM KISHORE DAS	AGM(EL)		PIO	9437003356
2	SARAT KUMAR BEHERA	Head Clerk	Ist App.Auth.		9437715928
XXXIV	EHT(CON)DIVN., ANGUL				
1	Prabeer Kumar Mallick	D.M.(ELE)		PIO	9438167670
XXXV	T.C.DIVN.NO.I,BHUBANESWAR				
1	P.Beura	AGM(TC)	Ist App.Auth.		9437025777
2	N.P.Nanda	AM(TC)		PIO	9437305904
3	N.Behera	AM(TC)		APIO	9437387543
XXXVI	T.C.DIVN.NO.II,BHUBANESWAR				
1	Sarat Ch.Panigrahi	Manager(TC)	Ist App.Auth.		9437136098
2	A.VASUDEV RAO	AM(TC)		PIO	9437097788
3	SOUMYAKANTA RAY	DM (TC)		APIO	9437281005
XXXVII	E&MR DIVN.DHENKANAL				
1	LALATENDU NAYAK	AGM(EL)	Ist App.Auth.		9437577919
2	B.B.NAYAK	J.M.(F)		PIO	9438708969
XXXVIII	E&MR DIVISION, RAYAGADA				
1	B.PANDA	AGM(EL)	Ist App.Auth.		9437177257

2	S.PATNAIK	AM(FINANCE)		PIO/APIO	9437447419
XXXIX	EHT(O&M)DIVN.THERUVALI				
1	MANORANJAN CHOUDHURY	AGM(EL)	Ist App.Auth.		9437577061
2	BISWAJIT DAS	DM(EI)		PIO	9937439879
XXXX	EHT(CON)DIVN.,BOLANGIR				
1	BISWAES NARAYAN BOHIDAR	AGM(EL)	Ist App.Auth.		94371148422
2	NIRANJAN PANDA	DM(EI)		PIO	9438643796
3	ASHOKANANDA GURU	DM(EI)		APIO	9437545857
XXXXI	EHT(CON)DIVN.,JHARSUGUDA				
1	SURENDRA PATEL	AGM(EL)	Ist App.Auth.		9437115584
2	SANDESH KU. PATEL	AM(EL)		PIO	9439040311
3	BUDHARAM MINZ	DM(EI)		APIO	9861175656
XXXXII	EHT STORE DIVN.,RAYAGADA				
1	MANORANJAN CHOUDHURY	AGM(EL)		PIO	9437577061
XXXXIII	EHT STORE DIVN.,BHUBANESWAR				
1	M.S.Pani	AGM(EL)	Ist App.Auth.		9437309678
2	S.K.Patnaik	Manager(F)		PIO	
XXXXIV	CIVIL WORKS DIVN.,II,BURLA				
1	S.S.Alli	E.E.(Civil)	Ist App.Auth.		9937033486
2	T.MOHANTY	SDO		PIO	
XXXXV	T.C.DIVN.,ROURKELA				
1	D.R.SINGHBABU	Manager(TC)	Ist App.Auth.		8895984479
2	ANJALI DEI	AM(TC)		PIO	8763801202
XXXXVI	EHT(O&M)CIRCLE,BERHAMPUR				
1	P.CH. DASH	GM(EL)	Ist App.Auth.		9437555905
2	A.K.PATRA	Manager(EI)		PIO	9338189230
3	B.C.PATTNAIK	AM(F)		APIO	6802291904
XXXXVII	EHT(O&M)DIVN.BERHAMPUR				
1	P.CH. DASH	GM(EL)	Ist App.Auth.		9437555905
2	P.C.MOHAPATRA	AGM(EL)		PIO	9437559787
XXXXVIII	EHT(CON)DIVN.,BALASORE				
1	N.C.SWAIN	AGM(EL)	Ist App.Auth.		9437229065
2	B.N.JENA	DM(EI)		PIO	9437377797
3	P.K.BEHERA	AM(F)		APIO	9437141977
XXXXIX	EHT(CON)DIVN.,BHUBANESWAR				
1	AMARNATH MOHANTY	AGM(EL)	Ist App.Auth.		9438019038
2	A.B.KHATOI	Manager(F)		PIO/APIO	9090846787
3	AMITAV MOHAPATRA	AM(F)		APIO	9861958764
XXXXX	EHT(O&M)DIVN.,CHAINPAL				
1	G.C.PATI	AGM(EL)	Ist App.Auth.		9437184487

2	P.PRADHAN	DM(EI)		PIO	9437253373
XXXXXI	EHT(O&M)DIVN.KESINGA				
1	B.C.PANDA	AGM(EL)	Ist App.Auth.		9437000339

Other Useful Information

(Manual -17)

Procedure and Fee Structure: Procedure and Fee Structure for getting information are similar to all other organization of Government of Orissa.

SCHEDULE Fee / Amount to be charged for providing information

A. Application fee	Rate to be charged	Mode of deposit				
(i).Application fee seeking	Rs.10/- per cash	Information application	(DDO Head Quarters)			
(ii) Application	fee	for	Rs.40/-Court	fee		stamp
Ist						appeal
(iii) Application	fee	for	Rs.50/-Court	fee	stamp	2nd appeal

B. Amount to be charged for providing information. (i).Inspection of documents Rs.15/- per each By cash hour of fraction thereof

(ii).A-4 size paper for each folio:- a). Typed copy/photocopy per page Rs.2/-By Cash

b). Printout from Computer per page Rs.10/- By Cash

(iii). C.D. with cover Rs.100/- per CD By Cash (iv). Floppy Diskette (1.44MB) Rs.100/- per floppy By Cash (vi). Video Cassette / Microfilm / -do- By Cash

Microfiche (vii). Certified sample of material -do- By Cash

NB: The applicant has to deposit the amount with the DDO head Quarters.One of the receipts shall be submitted to PIO/APIO.

DETAILS OF E.H.T SUB-STATIONS OF OPTCL, ORISSA.

Division	Sl. No.	S/S Name	kV Level	S/S Capacity (MVA)	ICT Capacity (MVA)	Auto Capacity (MVA)	Power Capacity (MVA)	Total Capacity (MVA)
Berhampur Circle								
Berhampur	1	Balugaon	132/33 kV	1x40+1x20+1x12.5 MVA, 132/33 kV			72.5	72.5
	2	Berhampur	132/33/11 kV	1x40+1x20 MVA, 132/33 kV 1x12.5 MVA, 132/11 kV			72.5	72.5
	3	Chhatrapur	132/33 kV	2x20 MVA, 132/33 kV			40	40
	4	Digapahandi	132/33 kV	2x20 MVA, 132/33 kV			40	40
	5	Ganjam	132/33 kV	2x12.5 MVA, 132/33 kV			25	25
	6	Mohana	132/33 kV	1x12.5+1x5 MVA, 132/33 kV			17.5	17.5
	7	Narendrapur	220/132/33 kV	2x160 MVA, 220/132 kV 1x40+1x20 MVA, 132/33 kV		320	60	380
Bhanjanagar	8	Aska	132/33 kV	2x40 MVA, 132/33 kV			80	80
	9	Bhanjanagar	220/132/33 kV	1x160+1x100 MVA, 220/132 kV 1x40+1x16 MVA, 132/33 kV		260	56	316
	10	Phulbani	132/33 kV	2x12.5+1x7.5 MVA, 132/33 kV			32.5	32.5
Burla Circle								
Bolangir	11	Bargarh	132/33 kV	3x40 MVA, 132/33 kV			120	120
	12	Barpali	132/33 kV	2x12.5 MVA, 132/33 kV			25	25
	13	Bolangir	132/33 kV	2x40 MVA, 132/33 kV			80	80
	14	Bolangir New	220/132/33 kV	2x100 MVA, 220/132 kV 1x12.5 MVA, 132/33 kV		200	12.5	212.5
	15	Patnagarh	132/33 kV	1x20+2x12.5 MVA, 132/33 kV			45	45
	16	Sonepur	132/33 kV	1x20+2x12.5 MVA, 132/33 kV			45	45

Burla	17	Brajaraj Nagar	132/33/11 kV	3x20 MVA, 132/33 kV 1x12.5 MVA, 132/11 kV			72.5	72.5
	18	Budhipadar	220/132/33 kV	2x160 MVA, 220/132 kV 1x20+1x12.5 MVA, 132/33 kV		320	32.5	352.5
	19	Jharsuguda	132/11 kV	1x20+1x12.5 MVA, 132/11 kV			32.5	32.5
	20	Katapalli	220/132/33 kV	2x100 MVA, 220/132 kV 2x20 MVA, 132/33 kV		200	40	240
	21	Rairakhole	132/33 kV	2x12.5 MVA, 132/33 kV			25	25
	22	Sambalpur	132/33 kV	2x31.5+1x20 MVA, 132/33 kV			83	83
Rourkela	23	Barkote	220/33 kV	1x40+1x20 MVA, 220/33 kV			60	60
	24	Chhend	132/33 kV	3x40 MVA, 132/33 kV			120	120
	25	Rajgangpur	132/33 kV	2x40 MVA, 132/33 kV			80	80
	26	Rourkela	132/33/25 kV	4x35 MVA, 132/33 kV 1x12.5 MVA, 132/25 kV			152.5	152.5
	27	Sundargarh	132/33 kV	1x40+1x20 MVA, 132/33 kV			60	60
	28	Tarkera	220/132 kV	4x100 MVA, 220/132 kV		400		400
Chainpal Circle								
Chainpal	29	Angul	132/33 kV	1x40+1x20 MVA, 132/33 kV			60	60
	30	Boinda	132/33 kV	2x12.5 MVA, 132/33 kV			25	25
	31	Chainpal	132/33 kV	1x40+2x20 MVA, 132/33 kV			80	80
	32	Dhenkanal	132/33 kV	2x40 MVA, 132/33 kV			80	80
	33	Kharagprasad	132 kV	132 kV Switching Station				0
	34	Kamakhyanagar	132/33 kV	2x12.5 MVA, 132/33 kV			25	25
	35	Meramundali	400/220/132/33 kV	2x315 MVA, 400/220 kV 2x100 MVA, 220/132 kV 1x12.5 MVA, 132/33 kV	630	200	12.5	842.5
Rengali	36	Rengali	220/33 kV	1x20 MVA, 220/33 kV			20	20
Cuttack Circle								
Bhubaneswar	37	Badagada	132/33 kV	1x40+1x20 MVA, 132/33 kV			60	60
	38	Bhubaneswar	132/33 kV	3x40 MVA, 132/33 kV			120	120
	39	Chandaka	220/132/33 kV	1x160+3x100 MVA, 220/132 kV 3x40 MVA, 132/33 kV		460	120	580
	40	Khurda	132/33 kV	3x40 MVA, 132/33 kV			120	120
	41	Mendhasala	400/220 kV	2x315 MVA, 400/220 kV	630			630
	42	Nayagarh	220/33 kV	1x40+2x20 MVA, 220/33 kV			80	80
	43	Nimapara	132/33 kV	1x40+2x12.5 MVA, 132/33 kV			65	65
	44	Puri	132/33 kV	1x40+2x31.5 MVA, 132/33 kV			103	103
	45	Ranasinghpur	132/33 kV	3x40 MVA, 132/33 kV			120	120
Choudwar	46	Bidanasi	220/132/33 kV	2x100 MVA, 220/132 kV 3x40 MVA, 132/33 kV		200	120	320
	47	Chandikhole	132/33 kV	2x20 MVA, 132/33 kV			40	40
	48	Choudwar	132/33 kV	2x40+1x20 MVA, 132/33 kV			100	100

	49	Cuttack	132/33 kV	2x40 MVA, 132/33 kV			80	80
	50	ICCL	132 kV	132 kV Switching Station				0
	51	Jagatsinghpur	132/33 kV	3x20 MVA, 132/33 kV			60	60
	52	Kendrapara	132/33 kV	2x40+1x12.5 MVA, 132/33 kV			92.5	92.5
	53	Nuapatna	132/33 kV	1x40+1x20+1x12.5 MVA, 132/33 kV			72.5	72.5
	54	Paradeep	220/132/33 kV	1x160+1x100 MVA, 220/132 kV 2x20+1x12.5 MVA, 132/33 kV		260	52.5	312.5
	55	Pattamundai	132/33 kV	2x20+1x12.5 MVA, 132/33 kV			52.5	52.5
	56	Phulnakhara	132/33 kV	1x20 MVA, 132/33 kV			20	20
	57	Salipur	132/33 kV	1x20+2x12.5 MVA, 132/33 kV			45	45
Jajpur Road Circle								
Balasore	58	Balasore	220/132/33 kV	1x160+1x100 MVA, 220/132 kV 2x40+1x12.5 MVA, 132/33 kV		260	92.5	352.5
	59	Baripada	132/33 kV	1x40+2x31.5 MVA, 132/33 kV			103	103
	60	Basta	132/33 kV	2x12.5 MVA, 132/33 kV			25	25
	61	Bhadrak	220/132/33 kV	2x100 MVA, 220/132 kV 3x40 MVA, 132/33 kV		200	120	320
	62	Jaleswar	132/33 kV	2x20+1x12.5 MVA, 132/33 kV			52.5	52.5
	63	Karanjia	132/33 kV	2x12.5 MVA, 132/33 kV			25	25
	64	Rairangpur	132/33 kV	1x20+1x12.5 MVA, 132/33 kV			32.5	32.5
	65	Somnathpur	132 kV	132 kV Switching Station				
	66	Soro	132/33 kV	1x40+2x20 MVA, 132/33 kV			80	80
Jajpur Road	67	Anandpur	132/33 kV	2x12.5 MVA, 132/33 kV			25	25
	68	Duburi	220/132/33 kV	3x100 MVA, 220/132 kV 1x40 MVA, 220/33 kV 1x5 MVA, 132/33 kV		300	45	345
	69	New Duburi	220 kV	Presently Charged at 220kV				0
	70	Jajpur Road	132/33 kV	1x40+2x20 MVA, 132/33 kV			80	80
	71	Jajpur Town	132/33 kV	2x40+1x20 MVA, 132/33 kV			100	100
	72	Kalarangi	132/33 kV	2x12.5 MVA, 132/33 kV			25	25
Joda	73	Bolani	132/11 kV	2x10 MVA, 132/11 kV			20	20
	74	Joda	220/132/33 kV	2x100 MVA, 220/132 kV 1x40+3x20 MVA, 132/33 kV		200	100	300
	75	Polasponga	132/33 kV	1x40+2x20 MVA, 132/33 kV			80	80
Jeypore Circle								
Jayanagar	76	Balimela	220/33 kV	2x20 MVA, 220/33 kV			40	40
	77	Jayanagar	220/132/33 kV	2x100 MVA, 220/132 kV 2x20+1x12.5 MVA, 132/33 kV		200	52.5	252.5
	78	Sunabeda	132/33 kV	3x12.5 MVA, 132/33 kV			37.5	37.5
	79	Tentulikhunti	132/33 kV	3x12.5 MVA, 132/33 kV			37.5	37.5
Kesinga	80	Junagarh	132/33 kV	2x20 MVA, 132/33 kV			40	40
	81	Kesinga	132/33 kV	1x40+2x20 MVA, 132/33 kV			80	80
	82	Khariar	132/33 kV	1x40+1x20 MVA, 132/33 kV			60	60

	83	Saintala	132/33 kV	1x12.5+1x10 MVA, 132/33 kV			22.5	22.5
Therubali	84	Akhusingh	132/33 kV	2x12.5 MVA, 132/33 kV			25	25
	85	Parlakhemundi	132/33 kV	2x12.5 MVA, 132/33 kV			25	25
	86	Rayagada	132/33 kV	2x12.5 MVA, 132/33 kV			25	25
	87	Therubali	220/132/33 kV	2x100 MVA, 220/132 kV 2x12.5 MVA, 132/33 kV		200	25	225
					1260	4180	4882.5	10322.5
INDUSTRIAL LILO SWITCHING STATIONS								
Burla	1	Aryan-Viraj	132 kV	132 kV Switching Station				
	2	Shyam DRI	132 kV	132 kV Switching Station				
Chainpal	3	OPCL	132 kV	132 kV Switching Station				
Choudwar	4	Arati Steels	132 kV	132 kV Switching Station				
	5	Maheswari Ispat	132 kV	132 kV Switching Station				
	6	OCL	132 kV	132 kV Switching Station				
	7	Rawmet Ferrous	132 kV	132 kV Switching Station				
Jajpur Road	8	Brahmani River Pellets Ltd.	132 kV	132 kV Switching Station				
	9	Jabamayee Ferro Alloys	132 kV	132 kV Switching Station				
Joda	10	Arya Iron	132 kV	132 kV Switching Station				
	11	Bee Kay Steel	132 kV	132 kV Switching Station				
Kesinga	12	Vedant Alumina	132 kV	132 kV Switching Station				
Rourkela	13	Shree Ganesh Metaliks	132 kV	132 kV Switching Station				

FORM-A

Application for information under section-6(1) of the Act

To

The Public Information Officer (Name of the office with address) 1. Full Name of the applicant

2. Father / Spouse name

3. Permanent Address

4. Particulars in respect of identity of the applicant

5. Particulars of information solicited

a). Subject matter of information

b). The period to which the information relates

c). Specific details of information required

d). Whether information is required by post or in person (The actual postal charges shall be included in proving information)

e). In case by post(ordinary, registered or speed)

6. Address to which information will be sent & in which form

7. Has the information provided earlier

8. Is this information not made available by the Public authority

9. Do you agree to pay the required fee

10. Have you deposited application fee (If yes, details of such deposit)

11. Whether belongs to BPL category, have you furnished the proof of the same

PLACE:

DATE : FULL SIGNATURE OF THE APPLICANT ADDRESS
OFFICE OF THE PUBLIC INFORMATION OFFICER

Received the application fromAddress on dated

seeking information.

PLACE:

DATE : Full name of the Public Information Officer Designation with seal

FORM-B

Information for payment

From Name & Designation of the Public Information Officer.

To Name of the applicant – Address

Sir,

Please refer to your application dated addressed to the undersigned requesting information on I am to inform you that, the following amount towards cost for providing information may be deposited in cash to enable the undersigned to furnish information sought for.

Please make payment within a period of fifteen days from the date of receipt of this intimation failing which the application shall be rejected. Fee

.....

Yours faithfully, Place : Dated :

PUBLIC INFORMATION OFFICER (SEAL)

FORM – C Information of rejection

Sir, The undersigned regrets to express his inability to furnish the information asked for on account of the following reasons:-

(i) It comes under the exempted category covered under sections-8 & 9 of the Act.

(ii) Your application was not complete in all respect.

(iii) Your identify is not satisfactory.

(iv) The information is contained in published material available to Public.

(v) You did not pay the required cost for providing information within the prescribed time.

(vi) The information sought for is prohibited as per section-24(4) of the Act.

(vii) The information would cause un-warranted invasion of the privacy of any person.

(viii) The information as sought for by you is available in our Website. you may download the information.

(ix) For any other reason please see overleaf.

However, if you feel aggrieved for the above said refusal you may file an appeal before the within 30 days of the receipt of this letter.

PLACE: NAME & DESIGNATION OF DATED :
PUBLIC INFORMATION OFFICER.

To
Shri.....
.....

FORM – D [See Rule-7(1)]

Form of Memorandum of Appeal to the first Appellate Authority under Section-19(1) of the Act.

From
.....

(Applicants Name & Address)

Before
The First Appellate Authority

1 Full Name of the Appellant :

Address :

Particulars of Public Information Officer :

Date of receipt of the order appealed against :

Last date for filing the appeal :

6. PARTICULARS OF INFORMATION A). NATURE AND SUBJECT MATTER OF THE : INFORMATION REQUIRED.

B). NAME OF THE OFFICE OR DEPARTMENT : TO WHICH THE INFORMATION RELATES.

2 THE GROUNDS FOR APPEAL : (DETAILS IF ANY TO BE ENCLOSED IN SEPARATE SHEET)

VERIFICATION

I, NAME OF THE APPELLANT, SON / DAUGHTER / WIFE OF HEREBY DECLARE THAT, THE PARTICULARS FURNISHED IN THE APPEAL AREA TO THE BEST OF MY KNOWLEDGE AND BELIEF, TRUE AND CORRECT AND THAT I HAVE NOT SUPPRESSED MY MATERIAL FACT.

SIGNATURE OF THE APPELLANT

PLACE

DATE

To..... (NAME &

ADDRESS OF APPELLATE AUTHORITY

- FORM – E [SEE RULE-7(3)]

SECOND APPEAL UNDER SECTION-19 (3) OF THE ACT.

FROM (APPLICANT'S NAME & ADDRESS)

TO THE STATE INFORMATION COMMISSION

1 FULL NAME OF THE APPELLANT :

ADDRESS :

PARTICULARS OF THE FIRST APPELLANT AUTHORITY :

DATE OF RECEIPT OF THE ORDER APPEALED AGAINST :

LAST DATE FOR FILING THE APPEAL :

6. PARTICULARS OF INFORMATION A). NATURE AND SUBJECT MATTER OF THE : INFORMATION REQUIRED.

B). NAME OF THE OFFICE OR DEPARTMENT : TO WHICH THE INFORMATION RELATES.

2 THE GROUNDS FOR APPEAL : (DETAILS IF ANY TO BE ENCLOSED IN SEPARATE SHEET)

VERIFICATION I, NAME OF THE APPELLANT, SON / DAUGHTER / WIFE OF HEREBY DECLARE THAT, THE PARTICULARS FURNISHED IN THE APPEAL AREA TO THE BEST OF MY KNOWLEDGE AND BELIEF, TRUE AND CORRECT AND THAT I HAVE NOT SUPPRESSED MY MATERIAL FACT.

SIGNATURE OF THE APPELLANT PLACE DATE

To

ORISSA STATE INFORMATION COMMISSION

RTI MANUAL- 9

ALL UPDATED MAN IN POSITION AS ON 01.11.2011 UNDER GRIDCO/OPTCL

<u>SL NO</u>	<u>EMP ID</u>	<u>NAME</u>	<u>DESIGNATION</u>	<u>PERMANENT ADDRESS</u>
1	37587	PRABODHA KUMAR MISHRA	AGM (ELEC)	R.C.P.LANE,B.P.CHHAK,CUTTACK
2	37222	UMAKANTA SAHOO	AGM (ELEC)	AT-MULKAIDA,ANANDAPUR,SORO,BALASORE
3	38542	BIKRAM KESHORI SINGH	AGM (ELEC)	AT/PO-SAHADEV KHUNTA,DIST-BALASORE
4	33620	PRADIPTA KUMAR MOHAPATRA	AGM (ELEC)	149/9A-ACHARYA BIHAR,BHUBANESWAR
5	33547	MANORANJAN MOHANTY	AGM (ELEC)	AT-BELAR,NUAGAON,POST-TERAGAON,KENDRAPARA
6	54892	BRUNDABAN JETHI	AGM (ELEC)	MANSINGHPATNA,MATHALANE,TULASIPUR,CUTTACK
7	61753	PRATAP CHANDRA MOHAPATRA	AGM (ELEC)	*
8	33435	NILAMBAR DASH (I/C 419)	AGM (ELEC)	AT/PO;RAYABAHADUR LANE,DIST-PURI
9	33422	MANORANJAN CHOUDHURY	AGM (ELEC)	PLOT NO.7, ANANDA SARANI, BERHAMPUR, DIST-GANJAM
10	38063	LAXMIKANTA MOHANTY	AGM (ELEC)	AHIYAS,JAJPUR
11	33448	KESHAB CHANDRA NAYAK	AGM (ELEC)	GANDHINAGAR 2 ND LANE BERHAMPUR.
12	33451	UTTAM KUMAR SAMAL	AGM (ELEC)	AT/PO-BALIABIL, BINJHARPUR, JAJPUR
13	37082	SACHINDRA PATTNAIK	AGM (ELEC)	JALANANDA,CHANDANPUR,MAUYRBHANJA

14	35749	GANGADHAR PATEL	AGM (ELEC)	AT-JANDA,PO-GOSAINPARA,SAMBALPUR
15	35723	KAILASH KUMAR AGARWALA	AGM (ELEC)	AT/PO/DIST-BARAGARH
16	34487	SANGRAM KISHORE DAS	AGM (ELEC)	AT/PO-SUNAHAT, BALASORE
17	37293	PARTHA SARATHI PATRA	AGM (ELEC)	AT-BADABAZAR, PO-BARIPADA, WORD NO.8, DIST-MAYURBHANJ
18	37123	LALATENDU NAYAK	AGM (ELEC)	AT-ARTUKAVIRAJ ROAD,PO-MOTIGANJA,BALASORE
19	35710	BIJAYA KUMAR SAHOO	AGM (ELEC)	*
20	37631	LINGARAJ DASH	AGM (ELEC)	RAJAGURU STREET,PARALAKHEMUNDI,GAJAPATI
21	36915	PURNENDU SEKHAR SAHOO	AGM (ELEC)	*
22	36663	UPENDRA NATH MISHRA	AGM (ELEC)	34/216 GAJAPATI NAGAR, SANIK SCHOOL,BBSR-05
23	37871	AMAR NATH MOHANTY	AGM (ELEC)	LIG-88,BARAMUNDA,H.B,CLONY,BHUBANAESWAR
24	33477	NIMAIN CHARAN SWAIN	AGM (ELEC)	AT-SENTO,PO-ALIRAMTA,PS-BALIKUDA,JAGATSINGHPUR
25	38469	BICHITRA NANDA NAYAK	AGM (ELEC)	AT/PO-MIRJAPUR,SALEPUR,CUTTACK
26	33464	RABI PRASAD NAYAK	AGM (ELEC)	AT-BHAGESWARPUR, PO-KENDRAPARA
27	35752	SURENDRA PATEL(I/C STORES DIVN J.GUDA)	AGM (ELEC)	*
28	37590	MADHUSUDAN PANI (I/C TA TO GM)	AGM (ELEC)	AT-AMARESWAR,PO-NIMAPARA,PURI
29	37884	BIKASH CHANDRA PANDA	AGM (ELEC)	
30	34560	BISWAS NARAYAN BOHIDAR	AGM (ELEC)	OPPOSITE CHURCH,G.M.COLLEGE ROAD,SAMBALPUR
31	36957	RADHA RAMAN PANDA	AGM (ELEC)	PALUR BANGLOW,BERHAMPUR
32	33406	SURENDRA NARAYAN BARIK	AGM (ELEC)	KANTAPALA,ITI CHAKA,CANAL ROAD,CHARAMPA,BHADRAK
33	35864	BIBHUDA NANDA UDGATA	AGM (ELEC)	*
34	35426	SANDEEP KUMAR PURI	AGM (ELEC)	*
35	37181	SHIBA SANKAR NAYAK(EXECUTIVE ASST.TO DIR.(COMM))	AGM (ELEC)	*
36	37149	ASHOK KUMAR SAMANTRAY(I/C GRIDCO DATA CENTER)	AGM (ELEC)	AT-ANEIPAL POST-MADHURGANDKHAMAR VIA-PATKURA DIST-KENDRAPARA
37	36973	SRIKANTA KUMAR CHOUDHURY(DEPUTED TO GRIDCO)	AGM (ELEC)	AT/PO-BHUSANDAPUR, DIST-KHURDA
38	38344	PURNA CHANDRA SAHOO(DEPUTED TO GRIDCO)	AGM (ELEC)	PLOT NO.1345, BRAMHASWARAPATNA, TANKAPANI ROAD, BHUBANESWAR
39	37040	NIHAR RANJAN PRADHAN	AGM (ELEC) EXECUTIVE ASST.	*
40	55998	GHANASHYAM KHATUA(DDO)	AGM (FINANCE)	RAMACHANDRAPUR,RAGADI, BANKI, CUTTACK
41	57877	BIBHUTI BHUSAN NAYAK	AGM (FINANCE)	AT/PO-BALIPATNA PS-PATAMUNDAI DIST-KENDRAPARA

42	52830	SAMBIT KUMAR SAMANTA	AGM (FINANCE)	PLOT NO-205/2,AERODRUM AREA, BHUBANESWEAR
43	53022	UMESH KUMAR GUPTA	AGM (FINANCE)	AT/PO:IRC VILLAGE,NAYAPALLI,BHUBANESWAR,KHURDA
44	49159	SRIKANTA KUMAR SAHOO(DEPUTED TO GRIDCO)	AGM (FINANCE)	*
45	36030	BIDYADHAR BHATTA(DEPUTED TO GRIDCO)	AGM (FINANCE)	VILL-BIRABHANDA KUHA BHUBANESWAR DIST-KHURDA
46	42572	SUBHENDU DASH (DEPUTATED TO GRIDCO)	AGM (FINANCE)	AT-KALIKA DEVI SAHI PURI DIST-PURI
47	42444	AJAYA KUMAR DAS	AGM (HRD) I	BAGADABARI, BINJHARPUR,CUTTACK
48	54595	SANJUKTA BEHERA (I/C PENSION&NODAL OFFICER LEGAL,IR,HR,PENSION)	AGM (HRD) II	VM-2,MODEL HOUSE BOARD COLONY,VSS NAGAR ,BBSR,KHURDA
49	42415	ANITA SATPATHY	AGM (HRD) III	BOUDHARAJ,PO-BOUDHARAJ,KANDHAMAL
50	37602	AJAY PRASAD PANDA	AGM (HRD) IV	AT-BHUBANPUR, JAGATPUR, CUTTACK
51	38795	RASMI KUMAR PANDA	AGM (HRD) V	HILL PATNA, BERHAMPUR, GANJAM
52	42767	CHANDRA SEKHAR PRADHAN(I/C MPPR,D.B CELL)	AGM (HRD) VI	PODAMARI, MAHANGA, CUTTACK
53	55550	PRIYADARSAN PATRA	AGM (IT)	AT-POLAMKABEREMILATABILA PO-BHUBANA DHENKANAL
54	25676	GOLAK BIHARI PANDA	AGM (IT)	AT-KANARPUR,ASARADA,BOLAGADA PURI
55	47056	GHANA SHYAM PANIGRAHI(DEPUTED TO GRIDCO)	AGM (LAW)	AT-SONPUR SONPUR DIST-SONPUR*
56	26897	BIPIN BIHARI SATAPATHY	AGM (TELECOM)	AT-NARASINGHPUR, PO-DHARMASALA, DIST-JAJPUR
57	57765	PRABHAKAR BEURA	AGM (TELECOM)	VILL-PRADHAN PATKURA, KUSUNPUR, PATKURA, KENDRAPARA
58	63306	SUSMITA DASH (REQUITATED TO GRIDCO)	ASST.COMPANY SECRETARY(MGR. RANK)	AT/PO:ATTA,PS:SUKINDA,DIST-JAJPUR,755018
59	23445	JITENDRIYA PRASAD DAS	CGM (ELEC)	PLOT NO-452,SAHID NAGAR,BBSR-07
60	21128	KISHORI MOHAN PARIDA	CGM (ELEC) O&M	PLOT NO.A79E,NAYAPALLI,NUASAHIBBSR
61	55547	RAMESH CHANDRA MISHRA	CGM (FINANCE)	AT-TARASIA SAHI POST-RAJARAN PUR DIST-NAYAGARH
62	55097	MANGALAGIRI ANANTA RAO	CGM (IT)	101,SHARDA BHABAN,NILAKHANTA NAGAR, NAYAPALLI,BBSR-751012.
63	64444	HEMANT SHARMA (IAS) (I/C GRIDCO)	CMD	BHAGWATT BHAWAN,KISHANPURA,JOGIYANPAL,SAHARANPUR,U.P-247001
64	55646	PRASANTA KUMAR DAS	COMPANY SECRETARY (SGM RANK,19.10.2011)	CHASHIRI, SHAKHIGOPAL, PURI
65	28002	PRADEEP KUMAR DAS (A)(I/C SLDC DATA CENTER)	DGM (ELEC)	OLD SADAN,THANA LANE,PURI
66	36999	PRADIPTA KUMAR DASH (I/C EHT (C) DIVN. CTC.)	DGM (ELEC)	AT/PO-CHASHAKHANDA, JAGATSINGHPUR
67	26615	SAROJA KANTA PARIDA	DGM (ELEC)	AT/PO-CHARAPADA, PO-INDUPUR, KENDRAPARA
68	33493	BIMAL PRASAD MISHRA	DGM (ELEC)	KHUMUR,KHALARE,ANGUL,DHENKNAL

69	61638	SANJAY KUMAR HOTA(I/C GRID CO-ORDINATION COMMITE 90L)	DGM (ELEC)	AT-SUBHADRA APPT.,PO-RAGHUNATHPUR,KHURDHA
70	27737	PRAFULLA CHANDRA TRIPATHY	DGM (ELEC)	AT-ADARS NAGAR,SAMBALPUR
71	62015	KISHORE CHANDRA MISHRA	DGM (ELEC)	KOLATHAPATNA,GAUDUNI GADIA,JAJPUR
72	54780	BAISHNABA CHARAN PADHIHARY	DGM (FINANCE)	AT-THAURI KENDRAPADA DIST-KENDRAPADA
73	55518	GOBINDA CHANDRA AGARWALLA	DGM (FINANCE)	*
74	61696	KRUSHNA CHANDRA BEHERA	DGM (MECHENICAL)	JUGUDI,SIALA,GANJAM
75	66112	PRASANTA KUMAR PRADHAN	DIRECTOR (COMMERCIAL)	VSS NAGAR (WARD NO-IX),BARAGARH,SAMBALPUR-768028 ODISHA
76	55620	BIBHU PRASAD MOHAPATRA(I/C GM(FIN)OPTCL14.07.2011)	DIRECTOR (FIN. & CA)	AT-BADAMBADI, CUTTACK
77	64499	SANTANU KUMAR RATH	DIRECTOR (HRD)	FLAT NO-B/302,SONALI PALACE,SAILASHREE VIHAR,BBSR,KHURDA,ODISHA
78	56081	BANSHIDHAR OJHA(DEPUTED TO GRIDCO)	ECONOMIST(DGM RANK)	FAKIR SAHI,SUHAG PUR,KAKATPUR,PURI
79	63434	SAYAD SULEMAN ALI (I/C CWD BURLA,LOOK CWC BBSR)	EXECUTIVE ENGINEER(CIVIL)	QRS NO-3R-7/2,MLA COLONY,BBSR,KHURDA,751001.
80	24468	SANTOSH KUMAR DAS (A)	GM (ELEC)	TAKARADA,SERAGARH,GANJAM
81	24231	PRASANTA KUMAR DAS(A)	GM (ELEC)	PLOT NO198,SAHID NAGAR,BHUBANESWAR
82	24794	RABINDRA KAMILA	GM (ELEC)	AT-SANAGADIA,PO-BARIPADA,DIST-BARIPADA
83	24880	PRAFULLA CHANDRA DASH	GM (ELEC)	AT/PO-TANGANAPALLI,PS-CHHATARAPUR,GANJAM
84	25535	JITENDRA BASTIA	GM (ELEC)	AT-BASTIA NIVAS, COLLAGE CHHAK, PO-HAKIMPADA, DIST-ANGUL
85	24228	JNYANA RANJAN NAYAK	GM (ELEC)	AT-RAJABAZIKA,PO-TALA TELENGA BAZAR,CUTTACK
86	25692	BUDHESWAR NANDA(I/C TTPS & O&M DIVN CHAINPAL)	GM (ELEC)	CHHEND, ROURKELA
87	24778	ADITYA NARAYAN SAR	GM (ELEC)	*
88	60871	AJAYA KUMAR MOHANTY	GM (ELEC)	KETUAPAL, DADHIBAMANPUR, SINGHPUR, CUTTACK
89	25056	LAXMIDHAR MOHAPATRA(DEPUTED TO GRIDCO)	GM (ELEC)	AT-TUNAPUR, BADAMBA, SINGHPUR, CUTTACK
90	55576	SRINIVAS MOHAPATRA	GM (FINANCE)	AT/PO-B/CGEKKUA, PS-BARASHAI, MAYURBHANJ
91	55505	NIRANJAN SAHOO (I/C SLDC FIN.A&AUDIT)	GM (FINANCE)	AT/PO-JAGAMATAPRASAD, MADHYAKHANDA, DASAPALA, NAYAGARH
92	62440	RAJ KISHORE DAS	GM (TELECOM)	AT-MADHAB NAGAR,JANUGANJA,BHADRAK
93	63418	SYAMA PRASAD PATTANAIAK(OAS-I)	LAND OFFICER	QTR. NO-28,SANTI KUNJA,NEAR DIG OF POLICE OFFICE,BERHAMPUR-4,GANJAM
94	40309	SARBA PRIYA JETHY	MANAGER (ELEC)	DAGARPADA,CHANDINI CHOUCK,CUTTACK
95	37628	ASHOK KUMAR BEHURA	MANAGER (ELEC)	AT/PO-MUKTIMANDAPA SAHI, PURI
96	38906	PRASANT KUMAR DAS (B)	MANAGER (ELEC)	GUL NAGAR,KENDRAPARA

97	41252	PRASANT KUMAR SATPATHY	MANAGER (ELEC)	BIRAJAGENAPUR,PO-BEGUNATHPADA,GANJAM
98	38399	SUBRAT KUMAR MITRA	MANAGER (ELEC)	MADHUSUDAN NAGAR,TULASIPUR,CUTTACK
99	35707	PRASANTA KUMAR RATH	MANAGER (ELEC)	AT-GANGAPUR SASAN, PO-JAGAMOHAN, DIST-GANJAM
100	41278	BISWA RANJAN MISHRA	MANAGER (ELEC)	AT:BANAHARA, PO:BHAGAT PUR,KENDRAPARA
101	35778	BIBEKANANDA PANI (SDO)	MANAGER (ELEC)	BIJIDOL,KAHIHA,ANGUL
102	38302	UMESH PRASAD DAS (SDO)	MANAGER (ELEC)	NIMAKANA,TIRTOL,JAGATSINGHPUR
103	35822	PADMANAV SWAIN	MANAGER (ELEC)	JHANJIRMANGALA ,CUTTACK
104	42428	BIJAYA KUMAR DAS (SDO)	MANAGER (ELEC)	BARI BAGADA,BARI CUTTACK,JAJPUR
105	40958	RABI SANKAR MISHRA	MANAGER (ELEC)	KALNA, ST.BIJIPUR,BERHAMPUR
106	42741	CHITARANJAN BEHERA	MANAGER (ELEC)	AT/PO- DAHISADA SORO DIST- BALASORE
107	38513	SANKAR KRISHNA (SDO)	MANAGER (ELEC)	*
108	54946	MAYA BANDHU PRADHAN	MANAGER (ELEC)	*
109	39114	RABI NARAYAN PANDA (SDO)	MANAGER (ELEC)	PLOT NO-1860, AT-NUASAHI, PO-NAYAPALLI, BHUBANESWAR
110	61964	PRASANTA KUMAR NAYAK(SDO)	MANAGER (ELEC)	*
111	38935	RABI NARAYAN SAHOO (SDO)	MANAGER (ELEC)	AT-AMUNIAPATANA,KAKATPUR,PURI
112	42387	SUKANTA PANDA	MANAGER (ELEC)	PLOT NO.105, NEW PAPUJI NAGAR, AERODROMA AREA, BHUBANESWAR
113	41533	PRAFULLA KUMAR PATI(I/C EHT © S/D NO-1 BBSR)	MANAGER (ELEC)	BHALANGA,RAHASOI,JAJPUR
114	39143	SUNKURU SUDHAKAR RAO	MANAGER (ELEC)	BEERAKA STREET, NEAR VENKATEAWAR TEMPLE,BERHAMPUR,GANJAM
115	62185	MD ZIAL HUDA	MANAGER (ELEC)	HOSPITAL ROAD,JAJPUR.
116	40396	ATULYA KUMAR PATRA	MANAGER (ELEC)	AT-QR.NO-C/620, COIL NAGAR,ROURKELA, SUNDERGARH
117	56586	JAYRAM SAHOO (SDO)	MANAGER (ELEC)	JHARGIRIPUR,KRUSHNAPRASAD,NIALI,CUTTACK.
118	41223	A.RAMESWAR RAO SUBUDHI (SDO)	MANAGER (ELEC)	AT/PO-GOLLAPALI STREET, BERHAMPUR, GANJAM
119	44521	SURESH CHANDRA PATRA	MANAGER (ELEC)	AT/PO-BARUNA,VIA-DLAVERA,DIST-KENDRAPARA
120	38360	SADANANDA PATRA (SDO)	MANAGER (ELEC)	M.G. ROAD, COLLEGE SQUIRE, ASKA, DIST-GANJAM
121	41306	RAJ KISHORE PARIDA (SDO)	MANAGER (ELEC)	*
122	35848	RAJAT SEKHAR DAS BHATTAMISHRA (I/C220KV LINE S/D THERUVALLI,426)	MANAGER (ELEC)	AT-BOMIKHAL,GURDANAGAR,BUDHESWARI COLONY,BBSR
123	57736	JASOBANTA NARAYAN CHOUDHURY	MANAGER (ELEC)	AT/PO-BHUSANDAPUR, DIST-KHURDA
124	37800	BHUBANESWAR PANDA(I/C E&MR S/D RAYAGADA)	MANAGER (ELEC)	RAYAGADA

125	38638	MANAS RANJAN ROUL	MANAGER (ELEC)	ANANDANAGAR,HKIMPADA,ANGUL
126	41294	LAXMI KANTA MISHRA (SDO)	MANAGER (ELEC)	AT/PO-BANDRA,LOISINGA,BOLANGIR
127	42613	SUDIPTA SENGUPTA (SDO)	MANAGER (ELEC)	AT-SIDHESWAR LANE, PS-LALBAG,CUTTACK-8
128	38948	SANBHU NATH SAHA (SDO)	MANAGER (ELEC)	VILL-TILAKAPUR,PO-AMHARA,DIST-PATNA(BIHAR)
129	38951	TIKANATHA HARIJAN(SDO)	MANAGER (ELEC)	*
130	38472	SANKAR PRASAD PADHI	MANAGER (ELEC)	*
131	35806	ADIT KUMAR SHARMA(SDO)	MANAGER (ELEC)	AT-K.M.B.M. SAHI, PO-BARIPADA, DIST-MAYURBHANJ
132	38782	MANOJ KUMAR DAS(SDO)	MANAGER (ELEC)	AT/PO-SANSIDHA,PS-AUL,KENDRAPARA
133	39127	PRADIPTA KUMAR BHUYAN	MANAGER (ELEC)	AT-JAGADA,PO-JHIRAPANI,ROURKELA,SUNDARGADA-42
134	40325	SWAPANA KUMAR TRIPATHY	MANAGER (ELEC)	KHINDA BENTALA,ANGUL
135	41281	RABINDRA KUMAR SAHOO (I/C S/D JAJPUR ROAD)	MANAGER (ELEC)	
136	60660	NIKUNJA BIHARI MOHAPATRA	MANAGER (ELEC)	*
137	40312	SARADA KANTA SATPATHY (SDO)	MANAGER (ELEC)	
138	61654	RABINDRA NATH MOHAPATRA	MANAGER (ELEC)	*
139	44831	SANTOSH KUMAR PRADHAN	MANAGER (ELEC)	KESHABA STREET, MOTIGANJA, BALASORE
140	41546	SANJAYA KUMAR DUTTA	MANAGER (ELEC)	AT/PO-DHALPUR,DHENKANAL
141	42501	SUDHANSU SEKHAR NANDA	MANAGER (ELEC)	PLOT NO.1293/A,BRAHMESWAR COLONY,NEAR CANAL RASULGARH,BBSR
142	38414	GOPAL CHANDRA PATI (SDO)	MANAGER (ELEC)	KATHAJODI VIHAR,MADHU PATNA,CUTTACK.
143	41265	PRADIPTA KUMAR NANDA	MANAGER (ELEC)	*
144	42390	BIBHU PRASAD MOHAPATRA (SDO)	MANAGER (ELEC)	AT/PO-RASOL,DHENKANAL
145	41195	UPENDRA KUMAR PATI	MANAGER (ELEC)	BENAGAON,KANAS,PURI
146	57637	SWARUP KUMAR HARICHANDAN	MANAGER (ELEC)	PLOT NO.29-TANKAPANI ROAD,NEAR RAJARANI TEMPLE,RAJARANI COLONY,BBSR-2
147	38919	SAKTI PRASAD DAS	MANAGER (ELEC)	
148	55026	PRADEEP KUMAR DASH(B)	MANAGER (ELEC)	GAYATRI BHABAN,GANDHI NAGAR,BERHAMPUR,GANJAM
149	42626	GOPAL KRUSHNA PADHI	MANAGER (ELEC)	PLOT NO-11, SURYA NAGAR, UNIT-VII, BHUBANESWAR KHURDA
150	35765	SARAT KUMAR DAS	MANAGER (ELEC)	CHANDAN BAZAR, DHENKANAL TOWN, DIST-DHENKANAL
151	39945	TAPAS PATTANAIAK (I/C SAFETY)	MANAGER (ELEC)	
152	42600	JAYANTA KUMAR SENAPATI	MANAGER (ELEC)	

153	38779	SUSHANTA KUMAR PANIGRAHI	MANAGER (ELEC)	*
154	39130	PRASANTA KUMAR PANDA(I/C BILLING WORK R&T)	MANAGER (ELEC)	*
155	38373	GYANARANJAN PANIGRAHI	MANAGER (ELEC)	AT/PO-PRATAPADA, VIA-KANTAAPADA, DIST-BALASORE
156	39718	RAJ KISHORE PRADHAN	MANAGER (ELEC)	ARTAKABIRAJ ROAD,MOTIGANJ,BALASORE
157	62002	SAMIR KUMAR MOHANTY	MANAGER (ELEC)	*
158	33604	JAYANTA KUMAR PARICHHA	MANAGER (ELEC)	PLOT NO-32,SURYA NAGAR,UNIT-7,BBSR-03
159	60686	UMAKANTA SAHOO(DEPUTED TO GRIDCO)	MANAGER (ELEC)	BALAGANDI SAHI, PURI
160	37839	NURUDDIN KHAN(DEPUTED TO GRIDCO)	MANAGER (ELEC)	AT-GAWHARMAGAR,CHARINANGAL,BALICHANDRAPUR, CUTTACK
161	42402	PRIYABRATA PATNAIK (DEPUTATED TO OERC)	MANAGER (ELEC)	NIL
162	39099	PRASANT MAJHI	MANAGER (ELEC)	AT/PO-NANDAPUR,SAMBALPUR
163	19712	PURNA CHANDRA DAS (I/C CONST. DIVN CTC,O &M DIVN.CHOUDWAR)	MANAGER (FINANCE)	AT/PO-NARADA, TURINTIRA, BALIPATNA, KHURDA
164	21339	RAMESH CHANDRA MISHRA (I/C TELECOM DIVN. RKL.& E&MR DIVN RKL.)	MANAGER (FINANCE)	AT/PO-BIRAPURSOTAMAPUR, DIST-PURI
165	52489	RADHA RANI KHANDELWALLA (I/C O&M DIVN J.ROAD)	MANAGER (FINANCE)	C/O-JYOTI PHARMACEUTIAL TARA MARKET COMPLEX,MOTIGANJ,BALASORE.
166	21371	ATALA BIHARI KHATOI	MANAGER (FINANCE)	AT-ALIPUR, MAHASINGHAPUR, SALEPUR, CUTTACK
167	20882	BRUNDABAN CHANDRA DASH (I/C R&T CELL)	MANAGER (FINANCE)	AT-TARADING, ATHAGARH, CUTTACK
168	19080	SIBA KUMAR PATNAIK (I/C STORE DIVN.BBSR)	MANAGER (FINANCE)	PLOT NO.43/C,ASHOKNAGAR,DIST-KHURDA
169	21285	PRADEEP KUMAR PATTANAYAK	MANAGER (FINANCE)	TELENGA SAHI,ANGURGADIA,BALASORE
170	18124	GOURA CHANDRA NAYAK	MANAGER (FINANCE)	AT/PO-PATRAPUR, JARADA, GANJAM
171	20895	RABI NARAYAN DAS(I/C GCC 90L)	MANAGER (FINANCE)	AT-DIHABALIANTA,BENUPUR,BALIANTA,KHURDA
172	55969	SANKARSAN SAHOO	MANAGER (FINANCE)	AT/PO-BHARALO PO-RAHAMA DIST-JAGTSINGHPUR
173	44550	ANITA MAHAPATRA(I/C D.B CELL&PA CELL)	MANAGER (HRD)	PLOT NO.240/14, AERODRUM AREA, BHUBAESWAR, KHURDA
174	48037	RAM PRASAD PADHI	MANAGER (LAW)	AT-HEMAGIRI STREET PO-JEYPORE DIST-KORAPUT
175	38357	JAGANNATH PRASAD MOHANTY(DDO)	MANAGER (MECHENICAL)	AT/PO-DEBAGRAMA,BALIKUDA,JAGATSINGHPUR
176	38766	PRADIPA KUMAR MISHRA	MANAGER (MECHENICAL)	NAYAGARH
177	28648	KARUNAKAR PRADHAN	MANAGER (TELECOM)	AT/PO-MANIKULA,BALASORE
178	28750	SARAT CHANDRA PANIGRAHI	MANAGER (TELECOM)	AT/PO-LAXMIPUR,KHOLAKHOLI,GANJAM
179	28635	DEBARAJ RATH	MANAGER (TELECOM)	PLOT NO.983, PRAKRUTI BIHAR, BARAMUNDA, BHUBANESWAR

180	28664	UMESH CHANDRA MOHANTY	MANAGER (TELECOM) TA TO GM	AT-MADHUANPADA,PO-BALASORE,BALASORE
181	63661	Dr.NALINI KANTA DAS(ON DEPUTATION FROM GOVT.)	MEDICAL OFFICER	HIG-181 SAILASRIVIHAR,DAMANA,KHURDA-751021
182	68372	Dr.NILAMADHAB MOHANTY	MEDICAL OFFICER	PLOT NO-1233©,HALDI PADIA,LAXMI SAGAR,BBSR,BUDHESWARI,KHURDA,751006
183	68385	Dr.RUPALITA PATNAIK	MEDICAL OFFICER	PLOT NO-240/118,AERODROME AREA,BHUBANESWAR,KHURDA
184	23669	BIBHU RANJAN MISHRA	SGM (ELEC)	H-375/K5,KALINGA NAGAR, PATRAPADA, BHUBANESWAR
185	54889	PRADIPTA KUMAR BEHURA	SGM (ELEC) C.P.C	AT/PO-SAMADHIPATNA,CUTTACK-753003
186	24244	CHINMAYA RAKSHIT	SGM (ELEC) CP	AT-SUELPUR,PO-MOTIGANJ,DIST-BALASORE
187	23599	RANJIT DAS	SGM (ELEC) PP	SARBODAYA NAGAR,PURI
188	23630	BIJAYA KUMAR TRIPATHY (I/C O&M)	SGM (ELEC) T&D	SATABDI VIHAR,BIDANASI,CUTTACK
189	23643	ASISH KUMAR SARKAR	SGM (ELEC) TP & C	AT-RAMABALLOV ROAD,PURI
190	55493	BRAJABANDHU SAHOO	SGM (FINANCE)	RAMPA,BARI,JAJPUR

RTI MANUAL-10 AS ON 1.11.2011

<u>SL NO</u>	<u>EMP ID</u>	<u>NAME</u>	<u>DESIGNATION</u>	<u>NEW BASIC</u>	<u>GRADE PAY</u>
1	37587	PRABODHA KUMAR MISHRA	AGM (ELEC)	28160	6600
2	37222	UMAKANTA SAHOO	AGM (ELEC)	28340	6600
3	38542	BIKRAM KESHORI SINGH	AGM (ELEC)	*	*
4	33620	PRADIPTA KUMAR MOHAPATRA	AGM (ELEC)	28160	6600
5	33547	MANORANJAN MOHANTY	AGM (ELEC)	28580	6600
6	54892	BRUNDABAN JETHI	AGM (ELEC)	28340	6600
7	61753	PRATAP CHANDRA MOHAPATRA	AGM (ELEC)	26730	6600
8	33435	NILAMBAR DASH (I/C 419)	AGM (ELEC)	27240	6600
9	33422	MANORANJAN CHOUDHURY	AGM (ELEC)	26410	6600
10	38063	LAXMIKANTA MOHANTY	AGM (ELEC)	26190	6600
11	33448	KESHAB CHANDRA NAYAK	AGM (ELEC)	27140	6600
12	33451	UTTAM KUMAR SAMAL	AGM (ELEC)	27860	6600
13	37082	SACHINDRA PATTNAIK	AGM (ELEC)	27360	6600

14	35749	GANGADHAR PATEL	AGM (ELEC)	27860	6600
15	35723	KAILASH KUMAR AGARWALA	AGM (ELEC)	26680	6600
16	34487	SANGRAM KISHORE DAS	AGM (ELEC)	28160	6600
17	37293	PARTHA SARATHI PATRA	AGM (ELEC)	27860	6600
18	37123	LALATENDU NAYAK	AGM (ELEC)	28340	6600
19	35710	BIJAYA KUMAR SAHOO	AGM (ELEC)	27400	6600
20	37631	LINGARAJ DASH	AGM (ELEC)	*	*
21	36915	PURNENDU SEKHAR SAHOO	AGM (ELEC)	26680	6600
22	36663	UPENDRA NATH MISHRA	AGM (ELEC)	27860	6600
23	37871	AMAR NATH MOHANTY	AGM (ELEC)	28160	6600
24	33477	NIMAIN CHARAN SWAIN	AGM (ELEC)	27860	6600
25	38469	BICHITRA NANDA NAYAK	AGM (ELEC)	26390	6600
26	33464	RABI PRASAD NAYAK	AGM (ELEC)	27860	6600
27	35752	SURENDRA PATEL(I/C STORES DIVN J.GUDA)	AGM (ELEC)	25700	6600
28	37590	MADHUSUDAN PANI (I/C TA TO GM)	AGM (ELEC)	28160	6600
29	37884	BIKASH CHANDRA PANDA	AGM (ELEC)	27,400	6,600
30	34560	BISWAS NARAYAN BOHIDAR	AGM (ELEC)	27400	6600
31	36957	RADHA RAMAN PANDA	AGM (ELEC)	28900	6600
32	33406	SURENDRA NARAYAN BARIK	AGM (ELEC)	27860	6600
33	35864	BIBHUDA NANDA UDGATA	AGM (ELEC)	28900	6600
34	35426	SANDEEP KUMAR PURI	AGM (ELEC)	26670	6600
35	37181	SHIBA SANKAR NAYAK(EXECUTIVE ASST.TO DIR.(COMM)	AGM (ELEC)	26700	6600
36	37149	ASHOK KUMAR SAMANTRAY(I/C GRIDCO DATA CENTER)	AGM (ELEC)	27360	6600
37	36973	SRIKANTA KUMAR CHOUDHURY(DEPUTED TO GRIDCO)	AGM (ELEC)	27860	6600
38	38344	PURNA CHANDRA SAHOO(DEPUTED TO GRIDCO)	AGM (ELEC)	26670	6600

39	37040	NIHAR RANJAN PRADHAN	AGM (ELEC) EXECUTIVE ASST.	27860	6600
40	55998	GHANASHYAM KHATUA(DDO)	AGM (FINANCE)	25920	6600
41	57877	BIBHUTI BHUSAN NAYAK	AGM (FINANCE)	22330	6600
42	52830	SAMBIT KUMAR SAMANTA	AGM (FINANCE)	22330	6600
43	53022	UMESH KUMAR GUPTA	AGM (FINANCE)	26410	6600
44	49159	SRIKANTA KUMAR SAHOO(DEPUTED TO GRIDCO)	AGM (FINANCE)	23700	6600
45	36030	BIDYADHAR BHATTA(DEPUTED TO GRIDCO)	AGM (FINANCE)	24970	6600
46	42572	SUBHENDU DASH (DEPUTATED TO GRIDCO)	AGM (FINANCE)	26410	6600
47	42444	AJAYA KUMAR DAS	AGM (HRD) I	27140	6600
48	54595	SANJUKTA BEHERA (I/C PENSION&NODAL OFFICER LEGAL,IR,HR,PENSION)	AGM (HRD) II	27140	6600
49	42415	ANITA SATPATHY	AGM (HRD) III	27140	6600
50	37602	AJAY PRASAD PANDA	AGM (HRD) IV	28580	6600
51	38795	RASMI KUMAR PANDA	AGM (HRD) V	27140	6600
52	42767	CHANDRA SEKHAR PRADHAN(I/C MPPR,D.B CELL)	AGM (HRD) VI	27140	6600
53	55550	PRIYADARSAN PATRA	AGM (IT)	25700	6600
54	25676	GOLAK BIHARI PANDA	AGM (IT)	31860	6600
55	47056	GHANA SHYAM PANIGRAHI(DEPUTED TO GRIDCO)	AGM (LAW)	22810	6600
56	26897	BIPIN BIHARI SATAPATHY	AGM (TELECOM)	30380	6600
57	57765	PRABHAKAR BEURA	AGM (TELECOM)	27830	6600
58	63306	SUSMITA DASH (REQUITATED TO GRIDCO)	ASST.COMPANY SECRETARY(MGR. RANK)	15600	6600
59	23445	JITENDRIYA PRASAD DAS	CGM (ELEC)	46420	9000
60	21128	KISHORI MOHAN PARIDA	CGM (ELEC) O&M	43210	9000
61	55547	RAMESH CHANDRA MISHRA	CGM (FINANCE)	44780	8800
62	55097	MANGALAGIRI ANANTA RAO	CGM (IT)	44820	9000

63	64444	HEMANT SHARMA (IAS) (I/C GRIDCO)	CMD	46330	10000
64	55646	PRASANTA KUMAR DAS	COMPANY SECRETARY (SGM RANK,19.10.2011)	41690	8700
65	28002	PRADEEP KUMAR DAS (A)(I/C SLDC DATA CENTER)	DGM (ELEC)	25870	6600
66	36999	PRADIPTA KUMAR DASH (I/C EHT (C) DIVN. CTC.)	DGM (ELEC)	29970	7600
67	26615	SAROJA KANTA PARIDA	DGM (ELEC)	28900	7600
68	33493	BIMAL PRASAD MISHRA	DGM (ELEC)	29970	7600
69	61638	SANJAY KUMAR HOTA(I/C GRID CO-ORDINATION COMMITE 90L)	DGM (ELEC)	28900	7600
70	27737	PRAFULLA CHANDRA TRIPATHY	DGM (ELEC)	28160	7600
71	62015	KISHORE CHANDRA MISHRA	DGM (ELEC)	19810	6600
72	54780	BAISHNABA CHARAN PADHIHARY	DGM (FINANCE)	26150	6600
73	55518	GOBINDA CHANDRA AGARWALLA	DGM (FINANCE)	29,360	7,600
74	61696	KRUSHNA CHANDRA BEHERA	DGM (MECHENICAL)	27400	7600
75	66112	PRASANTA KUMAR PRADHAN	DIRECTOR (COMMERCIAL)	*	*
76	55620	BIBHU PRASAD MOHAPATRA(I/C GM(FIN)OPTCL14.07.2011)	DIRECTOR (FIN. & CA)	14625	0
77	64499	SANTANU KUMAR RATH	DIRECTOR (HRD)	79000	7600
78	56081	BANSHIDHAR OJHA(DEPUTED TO GRIDCO)	ECONOMIST(DGM RANK)	30380	
79	63434	SAYAD SULEMAN ALI (I/C CWD BURLA,LOOK CWC BBSR)	EXECUTIVE ENGINEER(CIVIL)		
80	24468	SANTOSH KUMAR DAS (A)	GM (ELEC)	38790	8700
81	24231	PRASANTA KUMAR DAS(A)	GM (ELEC)	38790	8700
82	24794	RABINDRA KAMILA	GM (ELEC)	37400	8700
83	24880	PRAFULLA CHANDRA DASH	GM (ELEC)	37400	8700
84	25535	JITENDRA BASTIA	GM (ELEC)	37400	8700
85	24228	JNYANA RANJAN NAYAK	GM (ELEC)	38790	8700
86	25692	BUDHESWAR NANDA(I/C TTPS & O&M DIVN CHAINPAL)	GM (ELEC)	28900	7600

87	24778	ADITYA NARAYAN SAR	GM (ELEC)	37400	8700
88	60871	AJAYA KUMAR MOHANTY	GM (ELEC)	38790	8700
89	25056	LAXMIDHAR MOHAPATRA(DEPUTED TO GRIDCO)	GM (ELEC)	37400	8700
90	55576	SRINIVAS MOHAPATRA	GM (FINANCE)	41690	8700
91	55505	NIRANJAN SAHOO (I/C SLDC FIN.A&AUDIT)	GM (FINANCE)	37400	8700
92	62440	RAJ KISHORE DAS	GM (TELECOM)	28250	6600
93	63418	SYAMA PRASAD PATTANAIAK(OAS-I)	LAND OFFICER	20630	5400
94	40309	SARBA PRIYA JETHY	MANAGER (ELEC)	23510	6600
95	37628	ASHOK KUMAR BEHURA	MANAGER (ELEC)	26330	6600
96	38906	PRASANT KUMAR DAS (B)	MANAGER (ELEC)	26020	6600
97	41252	PRASANT KUMAR SATPATHY	MANAGER (ELEC)	25,350	6,600
98	38399	SUBRAT KUMAR MITRA	MANAGER (ELEC)	25430	6600
99	35707	PRASANTA KUMAR RATH	MANAGER (ELEC)	25240	6600
100	41278	BISWA RANJAN MISHRA	MANAGER (ELEC)	25400	6600
101	35778	BIBEKANANDA PANI (SDO)	MANAGER (ELEC)	21840	6600
102	38302	UMESH PRASAD DAS (SDO)	MANAGER (ELEC)	24490	6600
103	35822	PADMANAV SWAIN	MANAGER (ELEC)	26660	6600
104	42428	BIJAYA KUMAR DAS (SDO)	MANAGER (ELEC)	24350	6600
105	40958	RABI SANKAR MISHRA	MANAGER (ELEC)	25310	6600
106	42741	CHITARANJAN BEHERA	MANAGER (ELEC)	24340	6600
107	38513	SANKAR KRISHNA (SDO)	MANAGER (ELEC)	24490	6600
108	54946	MAYA BANDHU PRADHAN	MANAGER (ELEC)	21510	6600
109	39114	RABI NARAYAN PANDA (SDO)	MANAGER (ELEC)	25350	6600
110	61964	PRASANTA KUMAR NAYAK(SDO)	MANAGER (ELEC)	26070	6600
111	38935	RABI NARAYAN SAHOO (SDO)	MANAGER (ELEC)	25350	6600

112	42387	SUKANTA PANDA	MANAGER (ELEC)	25280	6600
113	41533	PRAFULLA KUMAR PATI(I/C EHT © S/D NO-1 BBSR)	MANAGER (ELEC)	25350	6600
114	39143	SUNKURU SUDHAKAR RAO	MANAGER (ELEC)	25320	6600
115	62185	MD ZIAL HUDA	MANAGER (ELEC)	24420	6600
116	40396	ATULYA KUMAR PATRA	MANAGER (ELEC)	24460	6600
117	56586	JAYRAM SAHOO (SDO)	MANAGER (ELEC)	25400	6600
118	41223	A.RAMESWAR RAO SUBUDHI (SDO)	MANAGER (ELEC)	25310	6600
119	44521	SURESH CHANDRA PATRA	MANAGER (ELEC)	21470	6600
120	38360	SADANANDA PATRA (SDO)	MANAGER (ELEC)	24490	6600
121	41306	RAJ KISHORE PARIDA (SDO)	MANAGER (ELEC)	25350	6600
122	35848	RAJAT SEKHAR DAS BHATTAMISHRA (I/C220KV LINE S/D THERUVALLI,426)	MANAGER (ELEC)	27280	6600
123	57736	JASOBANTA NARAYAN CHOUDHURY	MANAGER (ELEC)	25280	6600
124	37800	BHUBANESWAR PANDA(I/C E&MR S/D RAYAGADA)	MANAGER (ELEC)	26350	6600
125	38638	MANAS RANJAN ROUL	MANAGER (ELEC)	24490	6600
126	41294	LAXMI KANTA MISHRA (SDO)	MANAGER (ELEC)	24490	6600
127	42613	SUDIPTA SENGUPTA (SDO)	MANAGER (ELEC)	25400	6600
128	38948	SANBHU NATH SAHA (SDO)	MANAGER (ELEC)	25350	6600
129	38951	TIKANATHA HARIJAN(SDO)	MANAGER (ELEC)	25350	6600
130	38472	SANKAR PRASAD PADHI	MANAGER (ELEC)	23330	6600
131	35806	ADIT KUMAR SHARMA(SDO)	MANAGER (ELEC)	26660	6600
132	38782	MANOJ KUMAR DAS(SDO)	MANAGER (ELEC)	25350	6600
133	39127	PRADIPTA KUMAR BHUYAN	MANAGER (ELEC)	25350	6600
134	40325	SWAPANA KUMAR TRIPATHY	MANAGER (ELEC)	25320	6600
135	41281	RABINDRA KUMAR SAHOO (I/C S/D JAJPUR ROAD)	MANAGER (ELEC)	25350	6600

136	60660	NIKUNJA BIHARI MOHAPATRA	MANAGER (ELEC)	25320	6600
137	40312	SARADA KANTA SATPATHY (SDO)	MANAGER (ELEC)	25400	6600
138	61654	RABINDRA NATH MOHAPATRA	MANAGER (ELEC)	25350	6600
139	44831	SANTOSH KUMAR PRADHAN	MANAGER (ELEC)	21470	6600
140	41546	SANJAYA KUMAR DUTTA	MANAGER (ELEC)	25320	6600
141	42501	SUDHANSU SEKHAR NANDA	MANAGER (ELEC)	24380	6600
142	38414	GOPAL CHANDRA PATI (SDO)	MANAGER (ELEC)	25430	6600
143	41265	PRADIPTA KUMAR NANDA	MANAGER (ELEC)	24390	6600
144	42390	BIBHU PRASAD MOHAPATRA (SDO)	MANAGER (ELEC)	24350	6600
145	41195	UPENDRA KUMAR PATI	MANAGER (ELEC)	25400	6600
146	57637	SWARUP KUMAR HARICHANDAN	MANAGER (ELEC)	26080	6600
147	38919	SAKTI PRASAD DAS	MANAGER (ELEC)	25350	6600
148	55026	PRADEEP KUMAR DASH(B)	MANAGER (ELEC)	25280	6600
149	42626	GOPAL KRUSHNA PADHI	MANAGER (ELEC)	25400	6600
150	35765	SARAT KUMAR DAS	MANAGER (ELEC)	26660	6600
151	39945	TAPAS PATTANAIAK (I/C SAFETY)	MANAGER (ELEC)	25320	6600
152	42600	JAYANTA KUMAR SENAPATI	MANAGER (ELEC)	25400	6600
153	38779	SUSHANTA KUMAR PANIGRAHI	MANAGER (ELEC)	25400	6600
154	39130	PRASANTA KUMAR PANDA(I/C BILLING WORK R&T)	MANAGER (ELEC)	25320	6600
155	38373	GYANARANJAN PANIGRAHI	MANAGER (ELEC)	10200	5400
156	39718	RAJ KISHORE PRADHAN	MANAGER (ELEC)	25430	6600
157	62002	SAMIR KUMAR MOHANTY	MANAGER (ELEC)	25350	6600
158	33604	JAYANTA KUMAR PARICHHA	MANAGER (ELEC)	25440	6600
159	60686	UMAKANTA SAHOO(DEPUTED TO GRIDCO)	MANAGER (ELEC)	25350	6600
160	37839	NURUDDIN KHAN(DEPUTED TO GRIDCO)	MANAGER (ELEC)	26080	6600

161	42402	PRIYABRATA PATNAIK (DEPUTATED TO OERC)	MANAGER (ELEC)	23480	6600
162	39099	PRASANT MAJHI	MANAGER (ELEC)	25400	6600
163	19712	PURNA CHANDRA DAS (I/C CONST. DIVN CTC,O &M DIVN.CHOUDWAR)	MANAGER (FINANCE)	24430	5400
164	21339	RAMESH CHANDRA MISHRA (I/C TELECOM DIVN. RKL.& E&MR DIVN RKL.)	MANAGER (FINANCE)	24940	5400
165	52489	RADHA RANI KHANDELWALLA (I/C O&M DIVN J.ROAD)	MANAGER (FINANCE)	20800	6600
166	21371	ATALA BIHARI KHATOI	MANAGER (FINANCE)	25870	6600
167	20882	BRUNDABAN CHANDRA DASH (I/C R&T CELL)	MANAGER (FINANCE)	24940	5400
168	19080	SIBA KUMAR PATNAIK (I/C STORE DIVN.BBSR)	MANAGER (FINANCE)	26260	6600
169	21285	PRADEEP KUMAR PATTANAYAK	MANAGER (FINANCE)	25330	6600
170	18124	GOURA CHANDRA NAYAK	MANAGER (FINANCE)	23440	5400
171	20895	RABI NARAYAN DAS(I/C GCC 90L)	MANAGER (FINANCE)	26850	6600
172	55969	SANKARSAN SAHOO	MANAGER (FINANCE)	21670	6600
173	44550	ANITA MAHAPATRA(I/C D.B CELL&PA CELL)	MANAGER (HRD)	21950	6600
174	48037	RAM PRASAD PADHI	MANAGER (LAW)	22810	6600
175	38357	JAGANNATH PRASAD MOHANTY(DDO)	MANAGER (MECHENICAL)	26150	6600
176	38766	PRADIPA KUMAR MISHRA	MANAGER (MECHENICAL)	24460	6600
177	28648	KARUNAKAR PRADHAN	MANAGER (TELECOM)	27830	6600
178	28750	SARAT CHANDRA PANIGRAHI	MANAGER (TELECOM)	29130	6600
179	28635	DEBARAJ RATH	MANAGER (TELECOM)	28130	6600
180	28664	UMESH CHANDRA MOHANTY	MANAGER (TELECOM) TA TO GM	27450	6600
181	63661	Dr.NALINI KANTA DAS(ON DEPUTATION FROM GOVT.)	MEDICAL OFFICER	29470	7600
182	68372	Dr.NILAMADHAB MOHANTY	MEDICAL OFFICER	23120	5400
183	68385	Dr.RUPALITA PATTNAIK	MEDICAL OFFICER	15600	5400
184	23669	BIBHU RANJAN MISHRA	SGM (ELEC)	41690	8800

185	54889	PRADIPTA KUMAR BEHURA	SGM (ELEC) C.P.C	41690	8800
186	24244	CHINMAYA RAKSHIT	SGM (ELEC) CP	38790	8700
187	23599	RANJIT DAS	SGM (ELEC) PP	40220	8800
188	23630	BIJAYA KUMAR TRIPATHY (I/C O&M)	SGM (ELEC) T&D	41690	8800
189	23643	ASISH KUMAR SARKAR	SGM (ELEC) TP & C	41690	8800
190	55493	BRAJABANDHU SAHOO	SGM (FINANCE)	46380	8800