

BP41

PIPE LAYER

Salient Features :

- BEML B6D125 Diesel Engine
- Hydraulically Actuated
- Sturdy Construction of booms & track frame
- Heavy duty constant mesh transmission
- Hydraulically actuated counter weights
- Automatic Kickout device for boom
- Pilot operated work attachment



Flywheel Power (net) : 134 kW (180 hp) @ 1850 rpm

Max. Lifting Capacity : As per lifting performance curve.

BP41

PIPE LAYER

Salient Features :

BEML B6D125 Diesel Engine : For sustained power and fuel economy

Hydraulically actuated, oil cooled main clutch

Sturdy Construction : The boom is welded box section and operated by wire cables. Track-roller frames are made of high-tensile steel for maximum rigidity.

Transmission : Heavy duty, constant mesh transmission with helical gears.

Steering Clutches : Hydraulically actuated, self-adjusting oil cooled steering clutches for long life. Steering brakes are also oil cooled.

Commonality of parts with BEML BD80 makes it easy for servicing and replacement of parts besides proven reliability

Faster operation due to two raising and lowering speeds.

Automatic kick-out device for boom

Hydraulically actuated counterweights for increased stability

Lifting Performance : Maximum lifting capacity as per lifting performance curve to cater to wide range of pipe laying work with joystick control.



ENGINE

Make	BEML
Model	B6D125
Type	Water cooled, 4 cycle overhead valve, direct injection diesel engine
Net power (fhp)	134, kW (180hp) @ 1850 rpm ISO:9249
Maximum torque	80.0 kg-m @ 1100 rpm
No. of cylinders	6, inline
Bore x Stroke	∅ 125 x 150 mm
Displacement	0.011 m ³
Electricals	
Alternator	24 V, 55A
Starting motor	24 V, 7.5 kW
Battery	2 x 12 V, 200 Ah

TRANSMISSION

Transmission System Direct Drive		
Main clutch type	Wet multiple disc over centre engagement, hand operated with inertia brake & hydraulic booster	
Transmission		
Type	Helical gear, constant mesh, hand operated	
Bevel gear	Spiral type, single reduction	
Final Drive		
Type	Spur gear, double reduction	
Total reduction	17.187	
Gear Shift	5 forward, 4 reverse	
Travel speeds m/sec (km/h)		
Range	Forward	Reverse
1st	0-0.67 (0-2.4)	0-0.86 (0-31)
2nd	0-0.94 (0-3.4)	0-1.25 (0-4.5)
3rd	0-1.44 (0-5.2)	0-1.86 (0-6.7)
4th	0-2.05 (0-7.4)	0-2.67 (0-9.6)
5th	0-2.78 (0-10.0)	

BRAKES

Type	Wet contracting band. Foot operated supported by efficient linkages for light-touch actuation
------	---

STEERING SYSTEM

Type	Wet, multiple-disc foot operated with hydraulic together with spring type booster
Control	Wet contracting type, foot operated with back-up booster

FILTER SYSTEM

Engine	Replaceable cartridge type filter for lubrication as well as for fuel line.
Transmission	One magnetic oil strainer and one replaceable, element bypass filter is provided
Steering & Braking	Magnetic oil strainer is common to transmission, steering & braking system. Separate replaceable element type filter is provided for steering & braking
Hydraulic System	Magnetic plug & replaceable element type filter is provided.

MASS

Shipping Mass (Basic tractor with lubricating hydraulic, cooling systems and 10% of fuel capacity)	29,870 kg
--	-----------

STANDARD EQUIPMENT

- Hook & Boom winch
- 5.5m boom with cables
- Counter weight mechanism
- Hydraulic track adjusters
- Adequate lighting system
- Under guards

OPTIONAL ATTACHMENTS

- Insulated Canopy
- Safe Load Indicator System
- Long Boom (6.2m)
- Emergency Free Fall Winch

HYDRAULIC SYSTEM

Hydraulic Pump (which)	
Type	Gear pump
Capacity	335.5 l/min
Relief pressure	13.73 MPa (140kg/cm ²)
Hydraulic pump (Counter weight)	
Type	Tandem pump
Capacity	85 l/min
Relief pressure	13.73 MPa (140kg/cm ²)
Hydraulic Cylinder	
Type	Double acting piston
Counter weight	2 cylinders
Bore x Stroke	∅ 90 x 525 mm

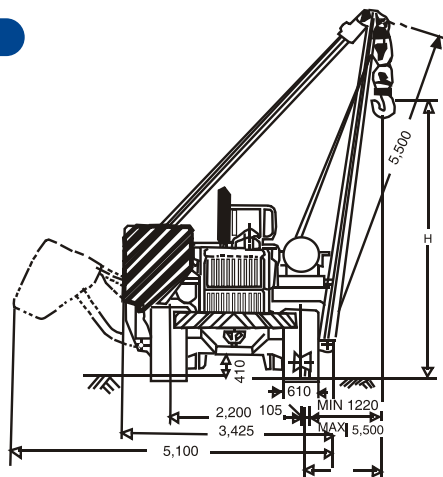
DIMENSIONS & OPERATING DATA

Overall length	4890 mm
Overall width	3425 mm
Overall height	2935 mm
Operating Data	
Pipe Laying Equipment	
Crane See chart	
Boom overhang (STD)	1.22 m to 5.5 m
Optional	1.22 m to 6.2 m
Hook speed (1st layer)	
Raise - 1st	6.5 m/min
- 2nd	13.0 m/min
Lower - 1st	6.5 m/min
- 2nd	13.0 m/min

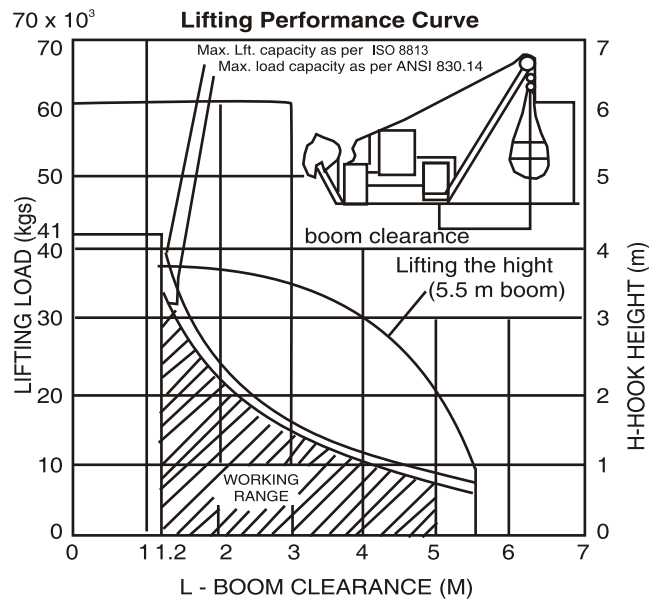
Boom	
Type	Welded box section and operated by wire cables
Length	5500 mm (Optional 6200 mm)
Weight	550 kg (585 kg)
Winch	
Type	Hydraulically operated, two speed, reversible
Driving System Powered continuously by hydraulic pump	
Drum brake	Automatic braking system
Transmission	Built in planetary system

Winch Drum	
Hook (dia x width)	∅ 323.85 x 431.8 mm
Boom (dia x width)	∅ 323.85 x 431.8 mm
Wire rope	
Hook (dia x width)	∅ 18 mm x 85 mm
Boom (dia x width)	∅ 18 mm x 60 mm
Counter Weight	
Tape	Segmented plate type, Hydraulically actuated
Weight (Incl. bracket)	4680 kg ± 6%
No. of plates	8
Safety Equipment boom	Automatic max. kick-out device

DIMENSIONS



CHART



Lifting Performance (as per ISO 8813)

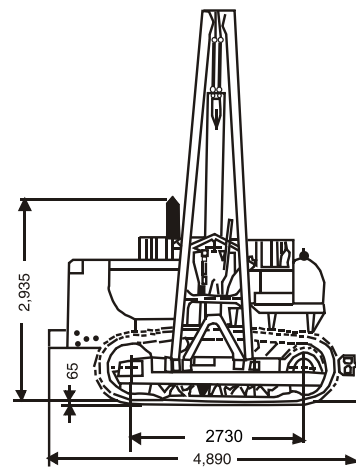
Based on the firm level ground operation and standard counter weight fully extended 5.5 m boom, 18 mm dia wire rope 21400 kg minimum breaking strength 6-part load line, 4-part boom line.

UNDER CARRIAGE

Suspension	Non-Oscillation type equalizer bar
Track Frame	Box section, high tensile strength steel construction
Track Rollers	6 nos. each side
Carrier Rollers	2 nos. each side
Track Shoes	38 nos. each side
Track Pitch	2200 mm
Grouser-Height	65 mm
Shoe width	610 mm (std)
Ground Pressure	85.3 kPa (0.87 kg/cm ²)
Ground contact area	3.330 m ²

COOLANT & LUBRICANTS CAPACITY (Refill)

System	Litres
Cooling System	65
Crank case	34
Fuel Tank	350
Main Clutch	25
Transmission, bevel gear torque converter & steering	75
Final drive (each side)	36
Hydraulic Tank	110



Material and specifications are subject to change without notice, Illustrations may include optional equipment & accessories

बी ई एम एल लिमिटेड BEML LIMITED

A Govt. of India Miniratna Company Under Ministry of Defence

Business Network

Corporate Office

BEML Soudha, 23/1, 4th Main,
S.R. Nagar, Bangalore-560 027

T + 91 80 22963240, 22963250

F + 91 80 22963278/516/280/164

E-mail: office@cpd.beml.co.in
office@pr.beml.co.in

International Business Division

BEML Soudha, 23/1, 4th Main,
S.R. Nagar, Bangalore-560 027

T + 91 80 22222730, 22233350
22963187, 22963215

F + 91 80 22224874

E-mail: office@export.beml.co.in

Marketing Division

5th Floor, Unity Building,
J.C. Road, Bangalore-560 002

T + 91 80 22963501/02/07/510/553

F + 91 80 22963541

E-mail: m@beml.co.in
bemldealer@dealer.beml.co.in

Global Service HQ

C-6, Central Hingna Road,
MIDC Industrial Area, Hingna,
Nagpur-440 028

T + 91 7104 287097/287098

F + 91 7104 287099

E-mail: ss.servicehq@gmail.com
ss@servicehq.beml.co.in

REGIONAL OFFICES

Bangalore

No -23/1, Haudin Road Cross,
Ulsoor Road, Bangalore - 560008
Karnataka

T + 91 080 22963590/92/93/94
F + 91 080 2558156
E-mail: mg@beml.co.in

Bilaspur

1/A, Sector-C, Srigitti Industrial Area,
P.O: Tifra, Bilaspur - 495 223.
Chhattisgarh.

T + 91 7752 252745, 252598
F + 91 7752 252065
E-mail: bilaspur@rm.beml.co.in

Chennai

Flat No. 10&11, Supriya Estates,
Sterling Road, Nungambakkam,
Chennai - 600 034, Tamil Nadu

T + 91 44 28276576 / 22820844
F + 91 44 28257319
E-mail: chennai@rm.beml.co.in

Dhanbad

Kamal Kunj, Kola Kusuma,
Saraidhela, Dhanbad - 828 127
Jharkhand

T + 91 326 2200180 / 2208982/5827
F + 91 326 2200182
E-mail: dhanbad@rm.beml.co.in

Hyderabad

3-6-114, Himayat Nagar,
Hyderabad - 500 029
Andhra Pradesh

T + 91 40 23225250 / 7032 / 2166
F + 91 40 23221794
E-mail: hyderabad@rm.beml.co.in

Kolkata

35/1, Taratala Road,
Kolkata - 700 088.
West Bengal

T + 91 33 24015286 / 87 / 98 / 99
F + 91 33 24015288
E-mail: kolkata@rm.beml.co.in

Mumbai

C/o Richardson & Cruddas (1972) Ltd.
3rd Floor, Corporate Office Building
Sir J.J Road Byculla, Mumbai - 400 020

T + 91 22 23781457 / 23781382
F + 91 22 23780915
E-mail: mumbai@rm.beml.co.in

Nagpur

33, Cement Road,
Shivaji Nagar,
Nagpur - 440 010, Maharashtra.

T + 91 0712 2248435 / 2248343
F + 91 0712 2249997
E-mail: nagpur@rm.beml.co.in

New Delhi

Flat EFGH, 'Vandana', 11th Floor,
Tolstoy Marg,
New Delhi - 110 001

T + 91 11 23310035 / 23316500
F + 91 11 23325085
E-mail: delhi@rm.beml.co.in

Ranchi

206/D-1, Bhagirathi, (Behind NCC Campus),
Rameshwaram Colony, Bariatu Road,
Ranchi, Jharkhand - 834009

T + 91 651 2540710 / 2540791
F + 91 651 2540624
E-mail: ranchi@rm.beml.co.in

Sambalpur

BEML Complex, NH-6, Baraipalli,
Sambalpur - 768 150
Orissa.

T + 91 663 2521604 / 2520393
F + 91 663 2521603
E-mail: sambalpur@rm.beml.co.in

Singrauli

PB No. 5, Jhingurdha Colliery,
Sidhi, Singrauli - 486 889
Madhya Pradesh.

T + 91 7805 268260 / 266668
F + 91 7805 267282 / 318
E-mail: singrauli@rm.beml.co.in

DISTRICT OFFICES

Ahmedabad

266-1, Dilbaug Villa,
Darshan Society Road, Navrangpura,
Ahmedabad - 380 009. Gujarat

T + 91 79 26445523
F + 91 79 26423950
E-mail: ahmedabad@rm.beml.co.in

Asansol

3, Bumpur Road,
Asansol - 713 304
West Bengal

T + 91 341 2252480
F + 91 341 2250601
E-mail: asansol@rm.beml.co.in

Bacheli

Behind Central Stores
of NMDC Ltd., Depot 5, Bacheli - 494 553.
Chhattisgarh

T + 91 7857 200518
F + 91 7857 230005
E-mail: bacheli@rm.beml.co.in

Bhopal

Ground Floor, Hall No.1, Chittod Complex
Zone-1, Maharana Pratap Nagar (MP Nagar)
Bhopal - 462 023

T + 91 755 2550711
E-mail: bemlbhopal@gmail.com

DISTRICT OFFICES

Bhubaneswar

252/A, LEWIS Road,
Bhubaneswar - 751 014
Orissa

T + 91 674 2434428
T/F + 91 674 2434427
E-mail: bhuvaneshwar@rm.beml.co.in

Chandrapur

Mamidwar, Tiles Factory Compound,
Ghugus Road, Padoli,
Chandrapur - 442 406 Maharashtra

T + 91 7172 287230
F + 91 7172 287072
E-mail: chandrapur@rm.beml.co.in

Cochin

No. 55/845, Chittor Road, Ernakulam South
Cochin-682 016

T + 91 484 2375138
E-mail: bemlkochi@gmail.com

GOA

67-12, Dattaprasad Building, 3rd Floor, MG road
Timphoni School, Panjim, - 403001, Goa

T + 91 832 2225135
E-mail: goa@rm.beml.co.in

Guwahati

Hegrabari Road, House No. 11,
Ganesh Puri, Dispur,
Guwahati - 781 006 Assam

T + 91 361 2232966
F + 91 361 2232967
E-mail: guwahati@rm.beml.co.in

Hospet

No. 1431, Manjunatha Complex, New Ward No. 31,
Bhagat Singh Nagar, Opp. KSSIDC Indl. Estate,
Dam Road, Hospet - 583 203, Karnataka

T + 91 8394 230173
F + 91 8394 230172
E-mail: hospet@rm.beml.co.in

Jammu

62C, Block D/C, Gandhi Nagar,
Jammu tawi - 180 004
Jammu and Kashmir

T + 91 191 2430447
F + 91 191 2477469
E-mail: jammu@rm.beml.co.in

Kothagudem

Old Project Planning Department,
Near SCCL Corporate Office,
Kothagudem - 507 101, Andhra Pradesh

T + 91 8744 245572
F + 91 8744 245530
E-mail: kothagudem@rm.beml.co.in

LEH

#135, Fort Road, Sheynam
LEH, Ladakh, 194 101

T + 91 9622973460
E-mail: bemlleh@gmail.com

Madurai

9-4/49, Kalai Nagar, IInd Main Road,
Madurai - 625 017, Tamil Nadu.

T/F + 91 452 2649458
E-mail: madurai@rm.beml.co.in

Neyveli

F-4, Rajendraprasad Road, Block-27
Neyveli - 607 803, Tamil Nadu

T/F + 91 4142 268517
E-mail: neyveli@rm.beml.co.in

Panjim

67-12, Dattaprasad Building, III Floor, MG Road,
Timphoni School, Panjim - 403 001, Goa

T/F + 91 832 2225135
E-mail: goa@rm.beml.co.in

Ramagundam

Opp. SCCL 11A Mines, Manthani,
(PO) Jallaram, GK - 505 184
Karimnagar Dt. Andhra Pradesh

T + 91 8728 248299
F + 91 8728 247423
E-mail: ramagundam@rm.beml.co.in

Udaipur

20-B Uchhaba Bhawan, Bedia Road,
New Fatehpura, Udaipur - 313 001.
Rajasthan

T + 91 294 2452053, 2452055
F + 91 294 2452054
E-mail: udaipur@rm.beml.co.in

Vijayawada

District Manager : Mr Rambabu

Mob +91 8330930990

Visakhapatnam

No. 8-45-11, 4h Lane, China Waltair Colony,
Visakhapatnam - 530 003

T/F 0891 2754608
E-mail: vizag@rm.beml.co.in

www.bemlindia.com

Represented by :

बी ई एम एल लिमिटेड BEML LIMITED

A Govt. of India Miniratna Company Under Ministry of Defence